

Experience youthful
vigour in a bottle



Proprietary Notice

KINOHIMITSU

The copyright in this work is vested in Kino Brands Pte Ltd. The recipient, must not reproduce or use the work either in whole or in part or for tendering, manufacturing purposes or any other purpose without obtaining Kino Brands Pte Ltd's prior agreement or consent in writing. A further condition of such reproduction or use is that this notice must be included in the reproduction or use.

This work also contains proprietary information belonging to Kino Brands Pte Ltd. This confidential information is to be used by the recipient only for the purpose for which it is supplied. The recipient must therefore obtain Kino Brands Pte Ltd's consent in writing before the recipient or any other person communicates any information (whether orally or in writing or any other manner whatsoever) on the contents or subject matter of the work or part thereof to any third party. The third party to whom the communication is made includes an individual firm or company or an employee or employees of such a firm or company.

The recipient further acknowledges that Kino Brands Pte Ltd has copyright in the work. The recipient manifests, by its receipt of the work, its acknowledgment of Kino Brands Pte Ltd's copyright in the work, its acceptance that the work is confidential information, and its compliance with the terms contained in this notice.

© **Copyright** 2014 Kino Brands Pte Ltd. This document contains proprietary information, which is protected by copyright. All rights are reserved. No part of this document may be photocopied, reproduced or translated to another language without prior consent of Kino Brands Pte Ltd.

Freeze Your Age

For a very long time, mankind has desperately searched for the “Elixir of Life”. With the effort of continuous research for more than 5 years, our professors, scientists and bio-technologists have developed and researched on a substitute for animal or human placenta extract, one that is not constraint by ethical, moral or religious concerns- the Snow Lotus Stem Cell. It is an anti-ageing solution for all, to give every cell a new life!

Kinohimitsu StemCell Drink is the most innovative and effective functional drink to regain youthfulness and delay ageing. It is uniquely formulated with Snow Lotus Stem Cell, DNA, RNA and collagen to promote skin beauty (outer) and boost overall body health (inner). With it, ageing can be delayed and quality life can be prolonged naturally!

You will love how soft and smooth your skin feel!
You will be surprised how fine lines seem to vanish!
You will be excited how energetic and active you can be again!

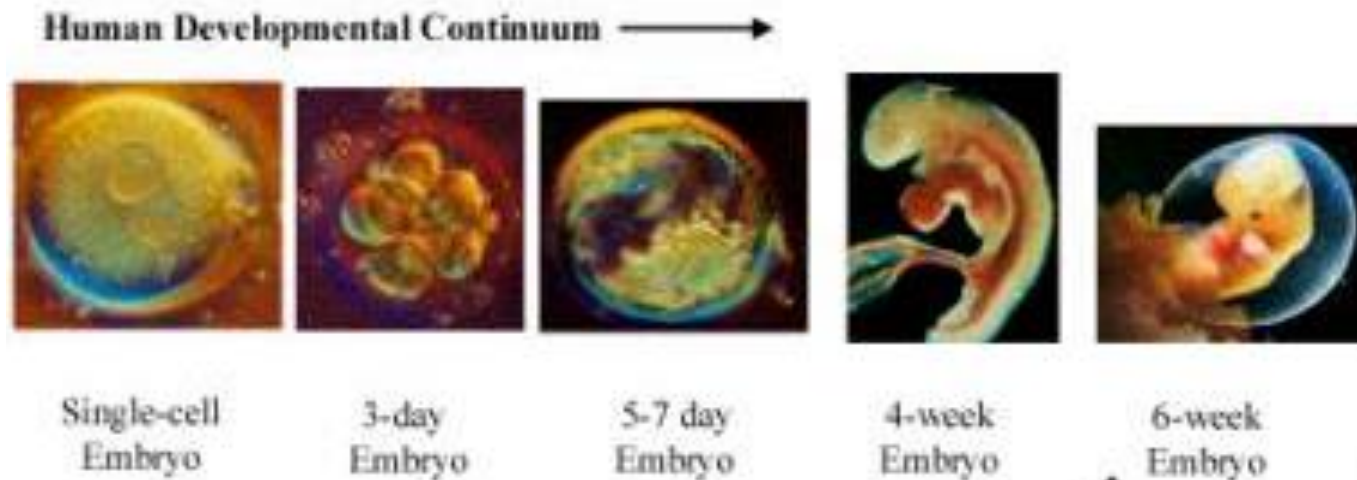


What is a stem cell?

A *stem cell* is the building block of the human body. It has the capability to **self-renew** – they can reproduce themselves many times over or they **develop into specialized cells** to replace them.

There are two types of stem cells:

- **Embryonic stem cell** 胚胎干细胞 – they are found within embryo, fetus or umbilical cord blood. These cells are totipotent (全能干细胞), which means it can develop into any 220 different cells in the human body.

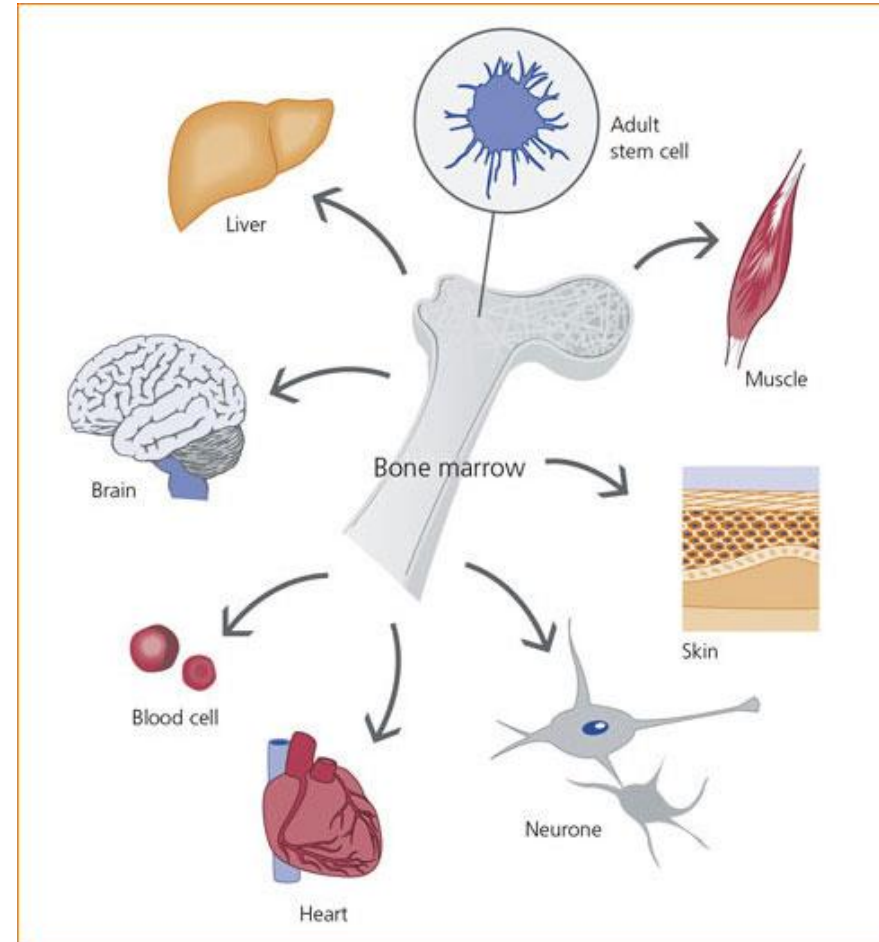


What is a stem cell?

- **Adult stem cell** 成体干细胞– They are found in infants, children and adults, located in heart, brain, kidney, liver, blood vessels, bone, muscle and skin.
- These cells are like the built-in repair kits in our body that regenerate cells that are damaged by disease, injury or everyday wear and tear. They can **self-renew** or divide to **repair or replace** the cells.

e.g. Red blood cells are not capable of reproducing and survive for about 28 days. To replace worn-out red blood cells, the stem cells in the bone marrow divide and differentiate into new red blood cells.

e.g. A cut on the skin.



The truth behind pre-mature ageing & illnesses

The cells renew themselves constantly throughout life where old and weak cells are replaced by new ones. In healthy young individuals, the division of cells takes place regularly in a sensible rhythm. However, this process begins to slow down as we age and is responsible for the signs of ageing.

Poor nutrition and large amounts of animal fats, processed sugars, preservatives, food additives, smoking, alcohol, stress and UV rays tend to suppress the cell renewal process even more. As a result, it accelerates premature aging and poor health conditions such as declining memory, easily feel fatigue, slow healing process, lack of concentration & focus, insomnia and so forth. And since our body is weak, it leaves our body to be more susceptible to illnesses and diseases.



When the self-renewal process of epidermal stem cells is slow, the lost or dying skin cells start to outnumber the new ones and the appearance of skin start to appear, such as dryness, wrinkles, pigmentations, etc.

You age because your cells age. Hence if you can control the aging process in your cells, you should be able to control your aging.



Kinohimitsu StemCell Drink

Through the many years of researches, our medical scientists, researchers and product specialists have successfully harnessed nature's healing gift –the plant's stem cell – and transforming it into a revolutionary product to promote youthful vigor and beauty from within. That's Kinohimitsu J'pan StemCell Drink!

It helps our own stem cells to induce cell renewal and protect cells from damage and thereby provide a long lasting results.

Who should take Kinohimitsu StemCell Drink?



Age 35
and above

Dry/ Wrinkled
skin

Dull/ sagging
skin

Pigmentations

Slow healing
process

Easily fatigue

Declining
memory

Body ache/
poor joint
flexibility

How it works?



Kinohimitsu StemCell Drink benefits both gender who wish to improve the quality of life.

At cellular level

- ✓ Re-activate own stem cells to stimulate new cell production
- ✓ Repair DNA and delay the degeneration of cells
- ✓ Protect cells from UV damage and oxidative stress
- ✓ Preserve the longevity and healthy of stem cells

Skin

- ✓ Improved skin elasticity
- ✓ Smoothen the appearance of fine lines and wrinkles
- ✓ Lighten pigmentations and skin discolorations

Physical and Mental Performance

- ✓ Enhance energy and vitality
- ✓ Improve alertness and mental sharpness

Bones and Joints

- ✓ Improve joint flexibility and agility
- ✓ Soothes and alleviates body aches

Immunity

- ✓ Strengthen immune health and cell self-repair system

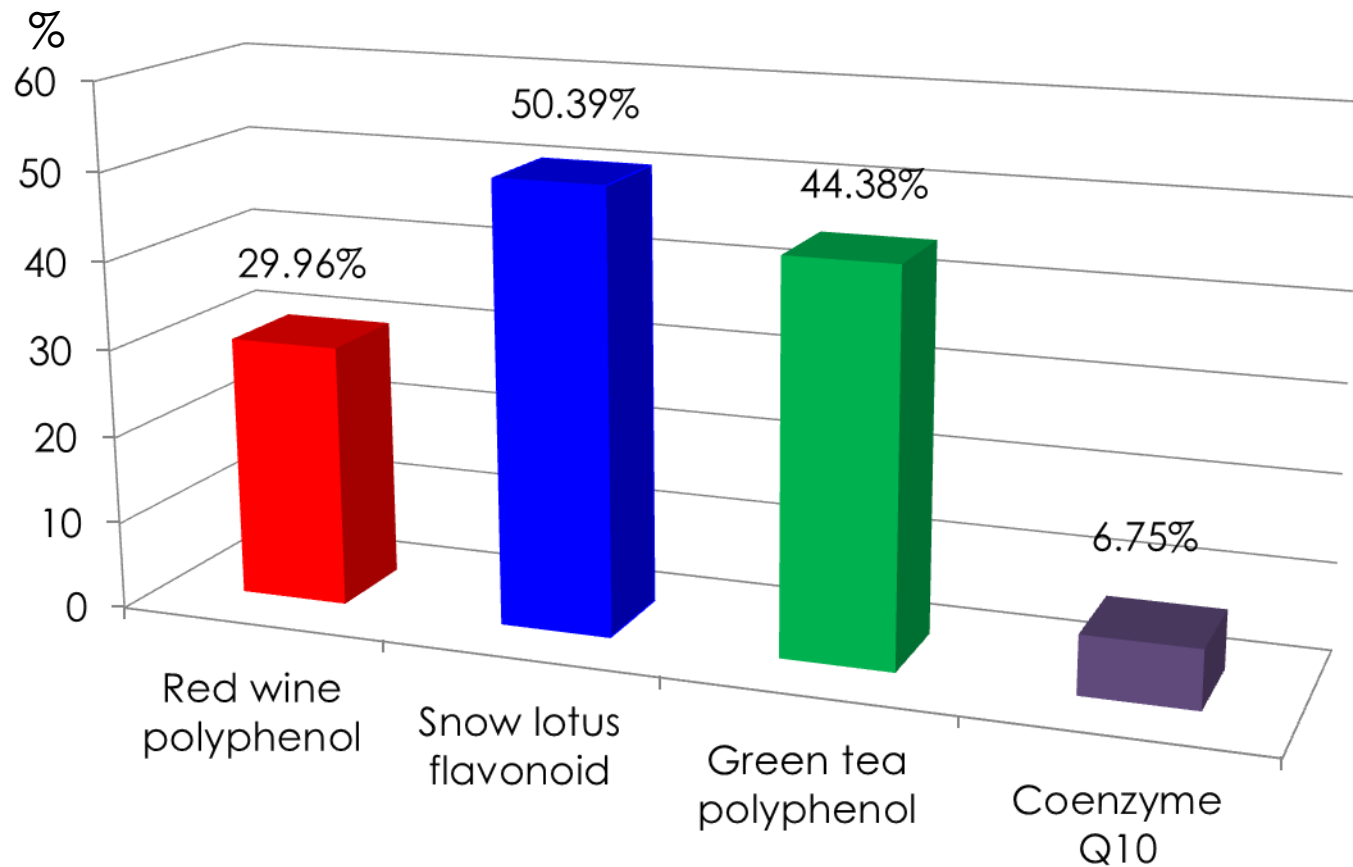
Ingredients

Snow Lotus Stem Cell is a U.S.A and Japan patented ingredient (Patented No.: US 61/290252; JP 2009-299220) from Snow Lotus that grows at the mountain peaks over 5,000 meters above sea level. It has brilliant white petals although it exposes to the sun all year long due to its powerful antioxidant and anti-radical properties.

Snow Lotus Stem Cells are totipotent. This means that they are able to perform similar functions as human stem cells where they are able to continuously regenerate new stem cells, repair old and damaged cells and protect cells from death due to UV exposure and free radical damage.

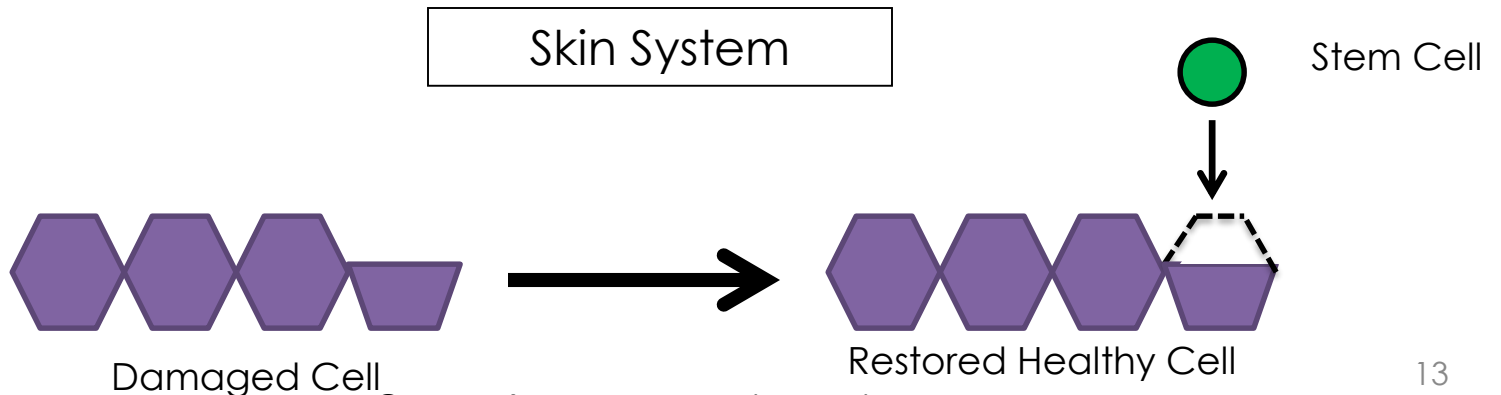
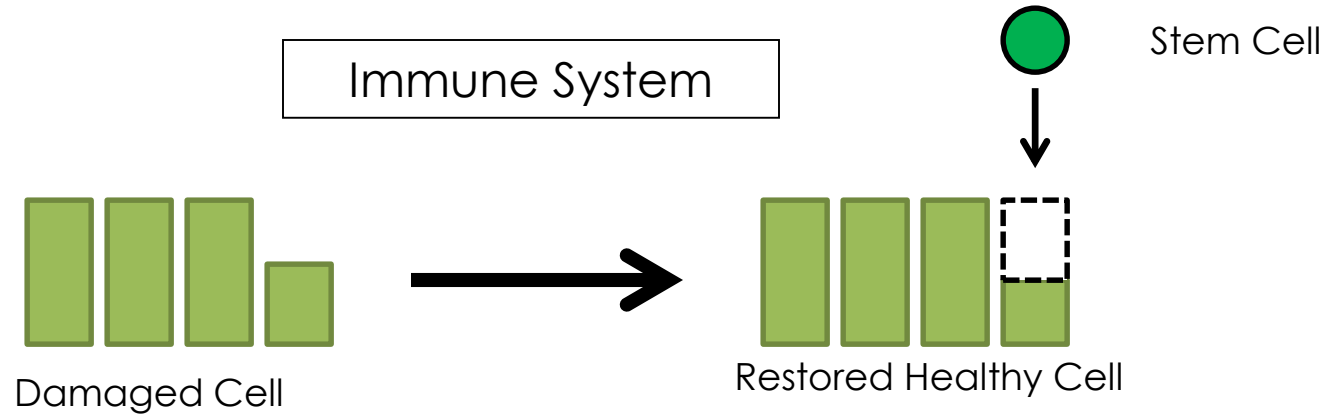
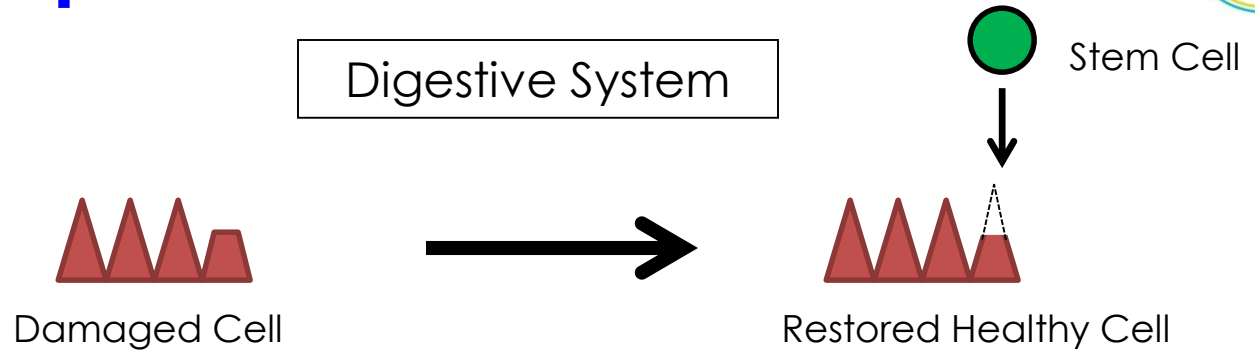


Graph 1. Snow Lotus flavonoids have the highest free radical scavenging activity (antioxidant activity) among the three ingredients.



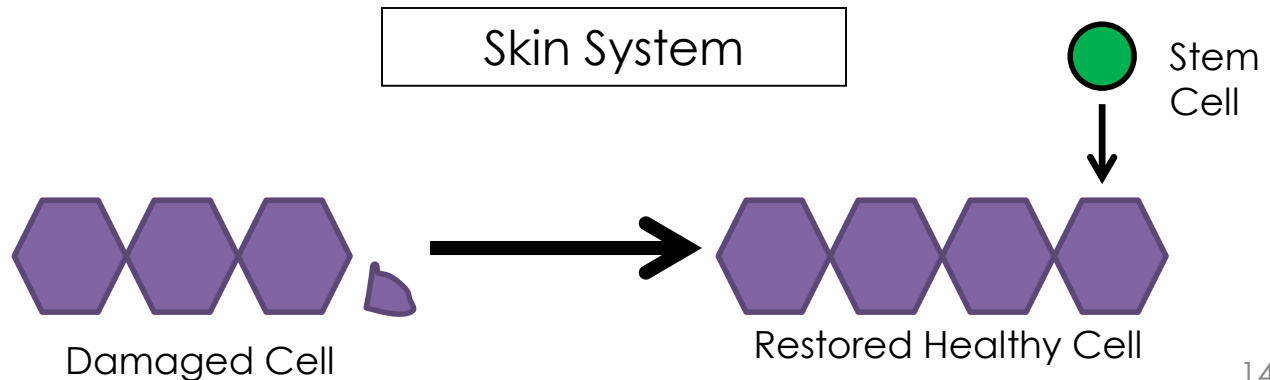
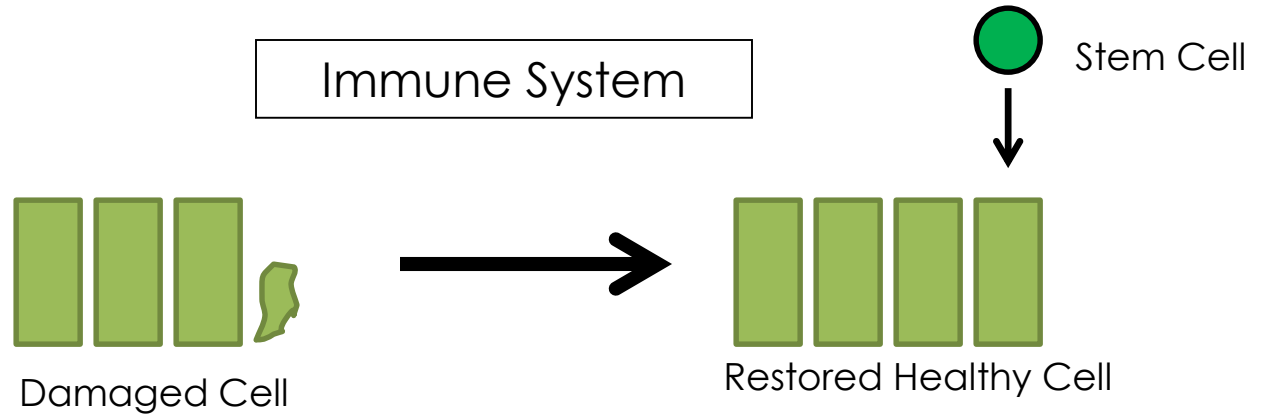
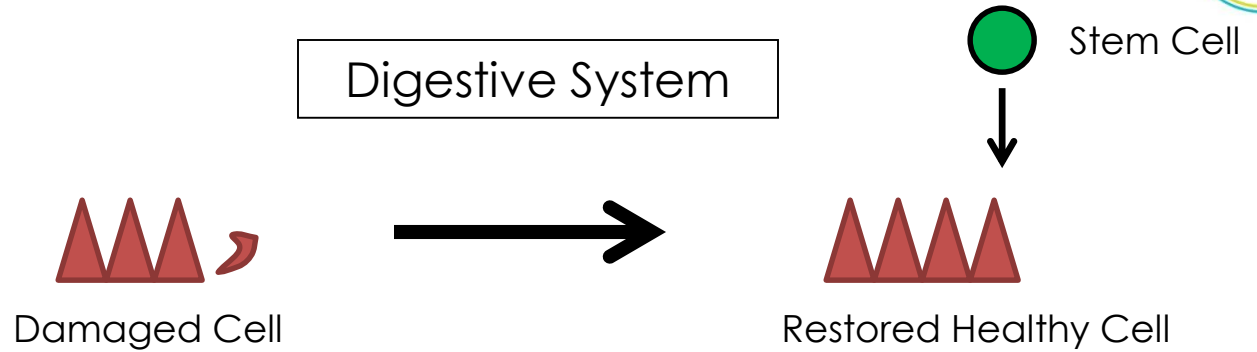
Stem Cell Repair Process

Examples:

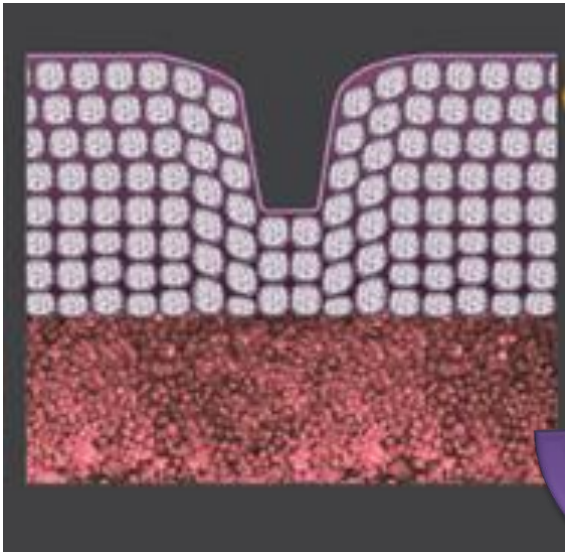
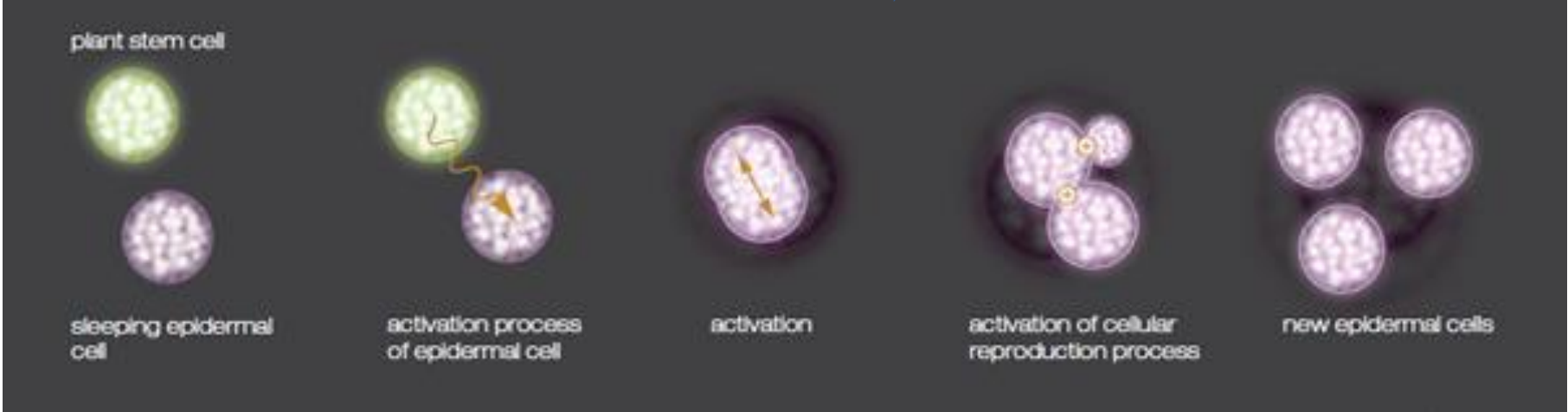


Stem Cell Replace Process

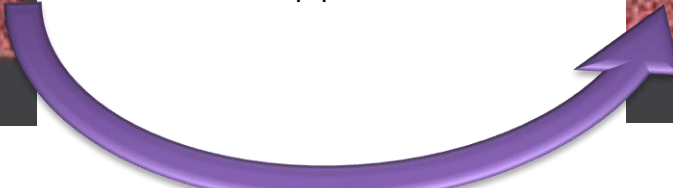
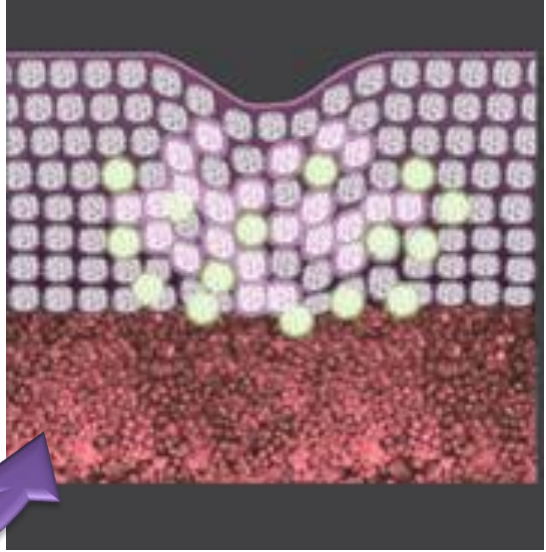
Examples:



Cellular Regeneration Process



Epidermal cells within skin are regenerated and revitalised by snow lotus stem cells to speed up cellular renewal. The skin restores its smoother, younger-looking and healthier appearance.



Cultivation of Snow Lotus Stem Cell

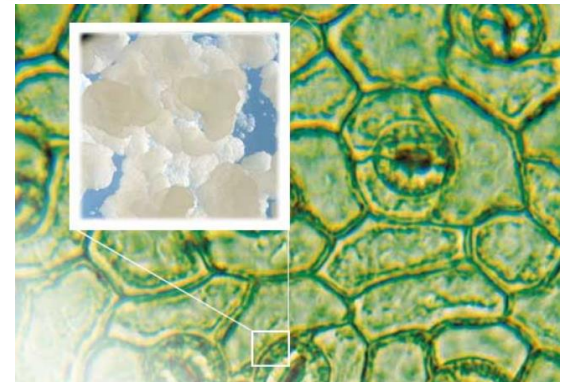
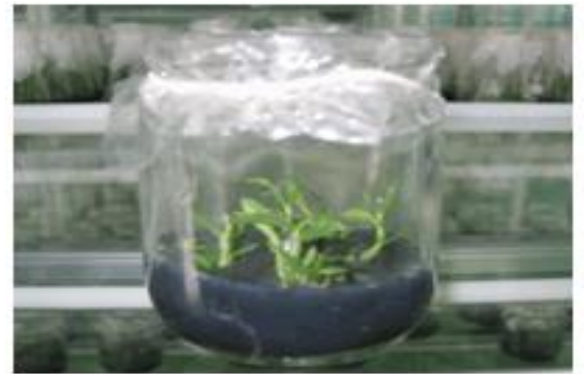
The proprietary biotech process allows the selection and reproduction of antioxidant-rich snow lotus stem cells in the lab under **pollution-free and radiation-free** environment. There are three steps in obtaining the stem cells:

ISOLATION: Identify and isolate the cell with the **highest active ingredient contents** from the plant.

PURIFICATION AND STANDARDIZATION: Incubate the stem cell in a bioreactor and reproduce it into **millions of identical stem cells**.

Our philosophy:

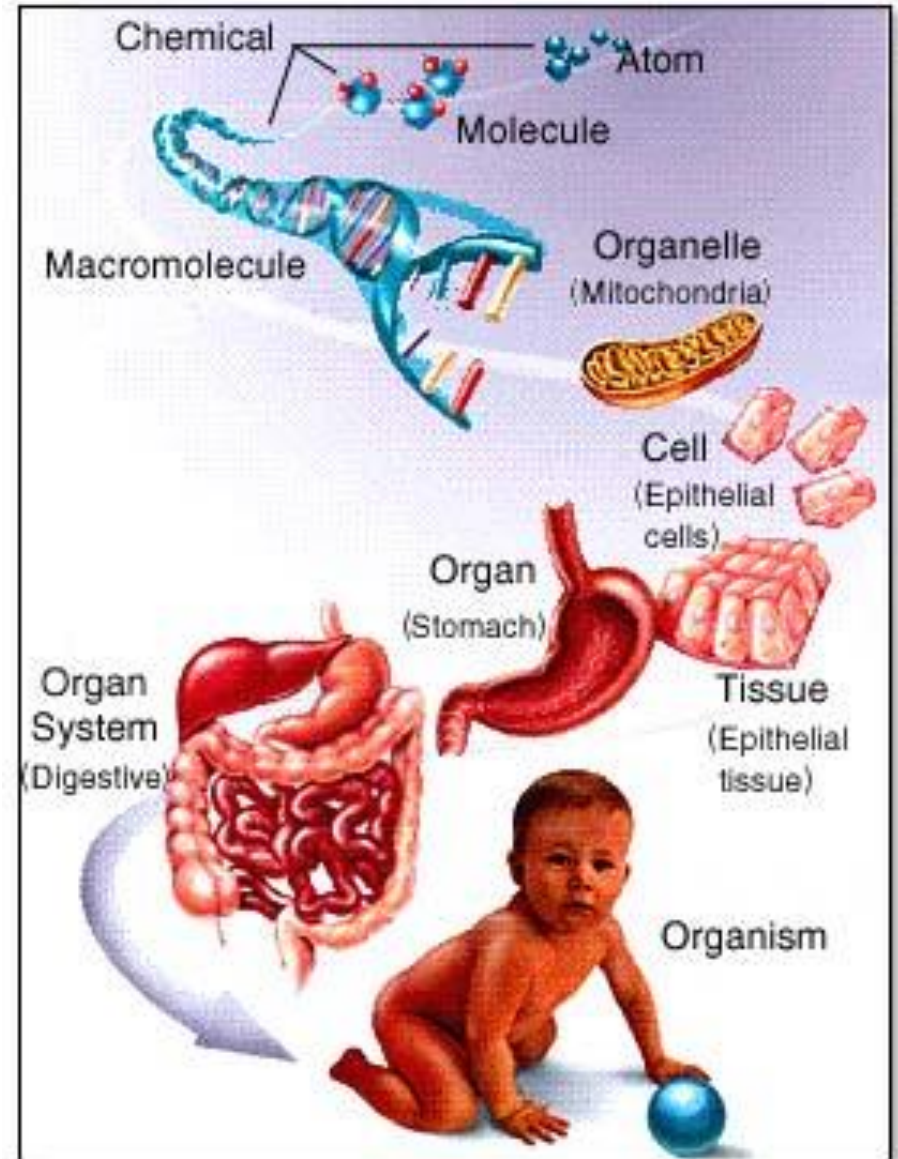
- Guaranteed maximum **purity, efficacy and safety** of plant stem cells
- Safeguard and protect the natural resources and the ecological balance for our planet. No plant is destroyed.



DNA & RNA

The nucleus serves as the cell's command center, sending directions to the cell to grow, mature, divide, or die. It also houses DNA (deoxyribonucleic acid), the cell's hereditary material. Most DNA is located in the cell nucleus, but a small amount of DNA can also be found in the mitochondria. Mitochondria converts the energy from food into a form that cells can use.

"DNA is our life source. Just improving a small percentage of our total DNA can make a major difference in the quality of our health, well being and longevity."
Dr. Vincent C. Giampapa, M.D., F.A.C.S.



Ingredients

DNA (deoxyribonucleic acid) **and RNA** (ribonucleic acid) are important elements in our cells and responsible for cells turnover! They protect cell against oxidative stress, slow down cellular ageing, enhance physical performance, alleviate fatigue and improve memory and mental sharpness. They also help to boost the immune system response and reduce recovery time.

(Marine DNA Patented No. JP 2003-235504; JP 2004-143110; JP 2007-135456; JP 6-22467; JP 2567231)

Collagen Peptide (Fish) in small molecule size allows immediate absorption by the body to plump up the skin.

Hyaluronic Acid (from chicken cartilage) and **Trehalose** (from seaweed extract) help to hydrate and lock-in moisture within the skin to prevent dryness. They help skin to look smoother and more supple.



Recommended consumption

Usage:

1 bottle a day preferably before breakfast or bed time. Shake well before drinking. Keep chilled for delicious taste.

First time Users:

1 bottle a day for a consecutive period of 6 days.

For maintenance:

1 bottle every 2 days.



Journal of Steroid Biochemistry

Volume 8, Issue 5, May 1977, Pages 415–417



Mammatrophic and growth promoting activities of a placental hormone in sheep

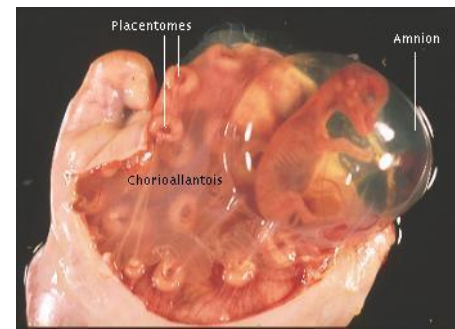
Jacques Martal, Jean Djiane

Institut National de la Recherche Agronomique, Laboratoire de Physiologie de la Lactation C.N.R.Z., 78350 Jouy-en-Josas, France

Abstract

An ovine placental lactogenic hormone has been isolated and purified. This placental hormone proved to be able to ensure mammary gland growth in pregnant ewes injected with ergocryptin. We show here: 1. The lactogenic activity of this hormone by using cortisol as inductor of milk secretion during pregnancy in sheep in which prolactin has been suppressed by ergoeryptin treatment. 2. The growth promoting activity by injecting the purified hormone in hypophysectomized rats. 3. The half-life and the pattern of change of prolactin-like and growth hormone-like activities during pregnancy in sheep by their respective radioreceptor assays. Detection of these two activities in fetuses suggests a possible role of this hormone in the fetal growth. All these facts confirm the existence in sheep of a lactogenic placental hormone exhibiting a marked growth hormone activity. Ovine chorionic somatomammotrophin seems therefore a suitable name.

Image A shows the placenta of a sheep. Animal placenta is high in hormones.



Animal Placenta vs Snow Lotus Stem Cell

	Animal Placenta	Snow Lotus Stem Cell
Safety	High in hormones such as progesterone and estrogen. The effect of long term intake of animal placenta on human body is unknown.	Contain no hormone and safe for long term consumption
Extraction process	The extraction process of placenta is unknown if slaughtering is involved	No plant is destroyed. The finest stem cells are obtained with a truly eco-sustainable approach.
Diseases	Possibility of Scrapie, Mad Cow Disease, Foot & Mouth Disease.	No
Effectiveness and Efficacy	Yes	Yes. It is formulated at the highest potency with maximum efficacy.

6 substantial reasons to choose Kinohimitsu StemCell Drink:



High quality and excellent ingredient: Snow Lotus Stem Cells are cultured at the state-of-the-art biotechnology to retain its high quality and pureness. It is rich in flavonoids antioxidants that provides great beneficial effects on human health.

Comprehensive formula: In addition to the patented Snow Lotus Stem Cell that contains powerful antioxidants and free radical scavenging ability, the formula also comprises of patented DNA, RNA, marine collagen peptides and moisturising ingredient- hyaluronic acid. Together, the formula works to optimise and maintain youthful skin and healthy body functions.

Delicious: More than just a tasty treat, every sip is packed with the goodness of beauty and health.

No additives: 100% natural and safe, no sugar added, no preservatives, no artificial colouring or flavouring.

Effective: Liquid formula enables immediate absorption by the body.

Convenience: A functional, instant drink ready for immediate consumption and enjoyment anytime, anywhere.

Q&A

Q: What is the difference between Snow Lotus Stem Cell and animal placenta?

A: There might be some controversial issues, namely moral, ethical and religious concerns from the production of animal placenta. In addition, it is known that plant-based stem cells are free from animal-related diseases such as Mad Cow, Scrapie, etc. Kinohimitsu StemCell Drink is 100% plant-based stem cell and hormone and steroid-free tested by SGS.

Q: How soon will I be able to see the results?

A: 100% of the subjects see visible results as soon as in 6 days (results may vary by individuals). They feel more energetic and alert, better concentration while at the same time gaining firm, radiant and smooth skin. It is advisable that you consume it regularly to obtain the best results.

Q: Is the drink suitable for men?

A: Of course. It is suitable for both women and men as it is 100% natural; it does not contain hormones, steroids and chemicals.

Q&A

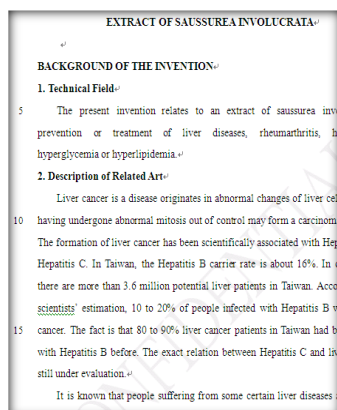
Q: How does it keep skin young and radiance?

A: **Kinohimitsu StemCell Drink** helps to prevent cells from premature death due to oxidation and stimulate fibroblast cells to promote collagen production. When the skin cells are young and healthy, the metabolized wastes (impurities, pigments, etc.) are removed timely and effectively. Thereby reduce pigmentations and restore skin radiance.

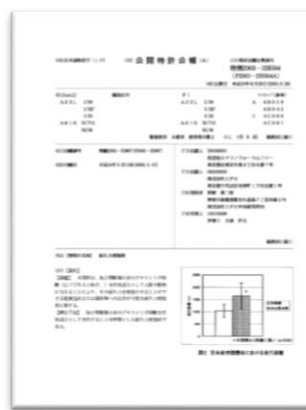
Patents



JP 2009-299220



US 61/290252



JP 2003-235504



JP 2004-143110



JP 2007-135456



JP 6-22467



JP 2567231



Thank You