



# KINOHIMITSU

**BRAND GUIDELINES**

VERSION 8.0 NOV 13 2015

# WELCOME TO THE KINOHIMITSU VISUAL IDENTITY SYSTEM

Successful brands are carefully managed.

This document establishes the Kinohimitsu brand principle and sets out parameters on how its brand elements are to be implemented. All the rules outlined here aims to create a unified and identifiable brand representation of Kinohimitsu.

It is critical that we communicate the Kinohimitsu brand consistently. It is intended to enable the brand's key stakeholders to understand the essence of the brand and be accountable on how this is communicated with a bigger audience, within or outside the Kinohimitsu community. The following pages explain how to use the new Kinohimitsu brand elements.

This would help us ensure that we are effectively optimising all our branding and communication initiatives through clear, focused and targeted communication of the Kinohimitsu's brand essence.

Please follow and adhere to these guidelines as they are here to help you communicate and protect our brand.

# CONTENT

|                                    |     |
|------------------------------------|-----|
| <b>Brand Platform</b>              | p04 |
| <b>Visual Identity System</b>      | p08 |
| <b>Packaging Design Templates</b>  | p24 |
| <b>Collateral Design Templates</b> | p53 |

# BRAND PLATFORM

## Brand Platform

The brand platform is our distinct DNA that defines core of Kinohimitsu. It is the overarching summary of the Kinohimitsu brand experience.

It includes the following elements:

- Essence: The unique vision of the brand distilled into a short meaningful phrase
- Narrative: The brand story that defines the brand experience and its key points of difference for the brand's stakeholders
- Individual values: Attributes that personify the brand, necessary to deliver the brand experience; this targeted to shared with an individual (apart from their social groups)
- Social values: The important principles the brand shares with people inside their social groups

This is fundamental in defining the strategic vision for the brand and establishes a foundation for the Kinohimitsu identity, messaging and visual presentation. Thus, all communication initiatives must be anchored to the realisation of the brand platform.

### 1. BRAND ESSENCE

---

# WELLNESS AMPLIFIED

Enrich your body's ability to feel great everyday through natural, scientifically proven and refreshing solutions.

### 2. SOCIAL VALUES

---

We set out to help **people feel happier, healthier and more confident** in their bodies and in their lives everyday.

### 4. BRAND NARRATIVE

---

**Our bodies are amazing things.** Within us, thousands of processes take place to help us deal with all of life's everyday challenges

We believe that the route to true wellness – feeling great everyday, is through activating and accelerating these processes. And we do this using all-natural ingredients that are scientifically proven to be effective.

### 3. INDIVIDUAL VALUES

---

## ASSURED

Rigorously tested ingredients which safely and effectively extends your wellness threshold.

## NATURAL

We are constantly finding the best nature has to offer. We only use responsibly sourced ingredients.

## UPLIFTING

Motivating, encouraging and rewarding you for taking control of your wellness.

## PROGRESSIVE

A passionate commitment to continuous improvement in our products & services.

## Brand World

### Look Speak Interact

The Brand World describes the manner in which we look, speak and interact within and outside the Kinohimitsu community. They are what our partners and consumers would identify us with and use to describe us. They are the principles that guide our actions and reflect our broad appeal.

Photography featured in this page may not be reproduced in part or in whole as part of any external communication.

#### LOOK



#### SPEAK



#### INTERACT



## Brand Architecture

To drive resonance between the brand and the Bloom, the Kinohimitsu Bloom has been deconstructed and each of its primary colours has been assigned to represent each of the brand's product category.

The Brand Architecture is represented by the following product categories and key alternative consumer segments, within the same hierarchy:

Kinohimitsu's product categories and its shade representation in the Bloom graphic are as follows

1. Detox represented by the shade of green
2. Beauty represented by the shade of purple
3. Health represented by the shade of orange
4. Fitness represented by the shade of teal

Two key alternative consumer segments are also represented in the Bloom graphic:

1. Kids represented by the shade of red
2. Men represented by the shade of blue

Colour is an important element of Kinohimitsu's visual identity system that when applied appropriately, reinforces brand recognition. Please ensure that the correct colourway is used across all brand communications at all times.



# VISUAL IDENTITY SYSTEM



## Kinohimitsu Logo

### Logo mark

C0 M0 Y0 K90 R49 G49 B51

The logo consists of the new word mark that inspired by the curves of flowers, capturing its blooming motion. This element has been specially drawn and the logo exists as a master artwork.

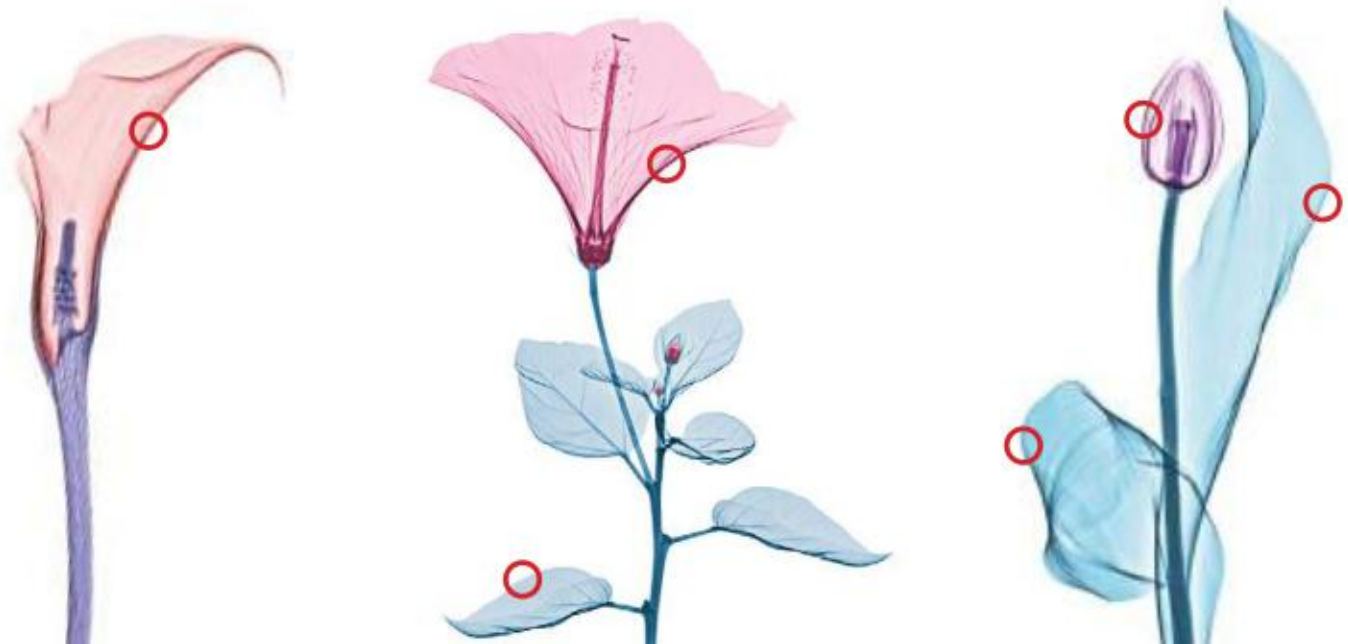
Our new logo has been carefully crafted to be unique, distinctive and a reflection of what we stand for as a brand.

### Please note:

The Kinohimitsu logo is to be used across all media in a horizontal version only. There is no vertical format of the logo mark.

The logo should only be reproduced from the master artwork and should not be redrawn or altered in any way. The master artwork is provided in a digital format and is to be secured only from the Kinohimitsu Marketing team.

# KINOHIMITSU.™



## Kinohimitsu Logo: Clearance Space

To protect the clarity and visual integrity of the logo, it has an exclusion zone. It must always appear legibly on a clear background.

Minimal size:  
18 x 2.18 mm (Print)  
or 51 x 6.18 pixels (Digital)

KINOHIMITSU



**K**   **x** = Height of letter K.

## Kinohimitsu Logo: Acceptable Colourways

The primary implementation of the Kinohimitsu logo mark is in Kino grey colour against a white across all brand communications.

Where printing is limited to a dark coloured background or in the case of packaging design, a reverse version of the logo may be adapted.

For more information on logo application on coloured background, please refer to **Kinohimitsu Logo on Coloured Background**.

■ R49 G49 B51  
C 0 M 0 Y 0 K 90

KINOHIMITSU

KINOHIMITSU

□ R255 G255 B255  
C 0 M 0 Y 0 K 0

## Kinohimitsu Tagline Lock-up

**Our bodies are amazing things. Within us, thousands of processes take place to keep us alive and well every day. We believe that the route to beauty and wellness is through aiding and boosting those processes. This way, we help your body be at its best. We set out to help people feel happier, healthier and more confident in their bodies and in their lives, giving them the freedom to live their lives to the fullest.**

We have created a new lock-up of the logo and our tagline. These elements have been specially drawn and the logo exists as a set of unique master artworks. Their sizes and position relative to one another are fixed.

When incorporated in communication initiatives, the lock-up should only be reproduced from the master artworks and should not be redrawn or altered in any way. The master artwork is provided in a digital format and is to be secured only from the Kinohimitsu Marketing team.

**KINOHIMITSU**  
FREEDOM TO LIVE

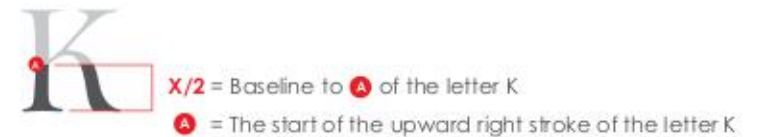
## Kinohimitsu Tagline Lock-up: Clearance Space

When used as a lockup with the master logo, our tagline, "FREEDOM TO LIVE," always appears centered with the logo, aligned with half "N" and "T". The distance from the baseline of the logo to the cap-height of the tagline is half to the height of the "K" space of the logo.

To protect the clarity and visual integrity of the logo, it has an exclusion zone. It must always appear legibly on a clear background.

Minimal size:  
36 x 8 mm (Print)  
or 102 x 22.8 pixels (Digital)

KINOHIMITSU  
FREEDOM TO LIVE



## Kinohimitsu Tagline Lock-up: Acceptable colourways

The primary implementation of the Kinohimitsu tagline lock-up is in Kino grey colour against a white across all brand communications.

Where printing is limited to a dark coloured background or in the case of packaging design, a reverse version of the lock-up may be adapted.

For more information on logo application on coloured background, please refer to **Kinohimitsu Logo on Coloured Background**.

R49 G49 B51  
C0 M0 Y0 K90



KINOHIMITSU  
— FREEDOM TO LIVE



KINOHIMITSU  
— FREEDOM TO LIVE

R255 G255 B255  
C0 M0 Y0 K0

## Kinohimitsu Logo Restrictions

Our logo is valuable.  
We must treat it as a significant asset  
and therefore with respect.

Always use the master digital artwork  
to reproduce the logo. Do not attempt  
to re-create, manipulate or alter the logo  
in any way or place the logo on non-  
specified backgrounds. If needed, the logo  
may be enlarged but only in proportion  
to the minimum size limitations.



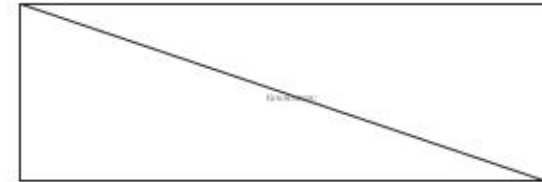
**Do not** colour the logo with a colour  
out of guidelines



**Do not** distort the logo.



**Do not** place the logo on a busy, complex  
background that interferes with legibility



**Do not** use a too small logo.  
Respect the minimum size.

## Kinohimitsu Logo on Coloured Background

Whenever possible, the Kinohimitsu logo or lock-up is to be placed on a white background or against any of the secondary colours as per the brand architecture only. These are powerful and distinct combinations.

Please ensure that the correct artwork is used for the background colours that are selected.

For more information on the background colours, please refer to **Kinohimitsu colour palette**.

For more information on the Bloom graphic, please refer to **Bloom Brand Graphic**.

### Primary Usages

#### On Light Background



#### On Dark Background



### Secondary Usages (On Secondary Colours)



### Exceptional Usages (On Bloom Brand Graphic)





## Typeface

There are two typefaces to be used for Kinohimitsu's brand communications initiatives. These are Placard MT Condensed and Century Gothic. It has been chosen because of its clarity and modern characteristics.

Placard MT Condensed will be used for headlines and Century Gothic will be used for all body copy.

The use of these selected typefaces and consistent typographic styling across all our application systems strengthen recognition of the Kinohimitsu brand.

Please note that the individual product variants will follow these typefaces to ensure that the personality and identity of the each product variant maintains its affinity with Kinohimitsu's overall look and feel.

**Placard MT Condensed** Headline Text  
Century Gothic Body Content

---

### 1. Placard MT

**ABCDEFGHIJKLMNOPQRSTUVWXYZ**  
**abcdefghijklmnopqrstuvwxyz**  
**1234567890**

---

### 2. Century Gothic

ABCDEFGHIJKLMNOPQRSTUVWXYZ  
abcdefghijklmnopqrstuvwxyz  
1234567890

**ABCDEFGHIJKLMNOPQRSTUVWXYZ**  
**abcdefghijklmnopqrstuvwxyz**  
**1234567890**

## Typography Principles - Basic

See applications for reference.

**Headline (Main)**  
**(Uppercase)**  
Placard MT Condensed  
Line spacing (10)

# WELLNESS AMPLIFIED

**Headline (All others)**  
**(Uppercase)**  
Placard MT Condensed  
Line spacing (10)

**ENRICH YOUR BODY'S ABILITY TO FEEL GREAT  
EVERYDAY THROUGH NATURAL, SCIENTIFICALLY  
PROVEN AND REFRESHING SOLUTIONS.**

**Subhead**  
**(Sentence case)**  
Century Gothic  
Line spacing (-25)

We set out to help **people feel happier,  
healthier and more confident** in their  
bodies and in their lives everyday.

**Body copy**  
**(Sentence case)**  
Century Gothic  
Line spacing (-25)

**Our bodies are amazing things.** Within us, thousands  
of processes take place to help us deal with all of life's  
everyday challenges. We believe that the route to true  
wellness – feeling great everyday, is through activating  
and accelerating these processes.

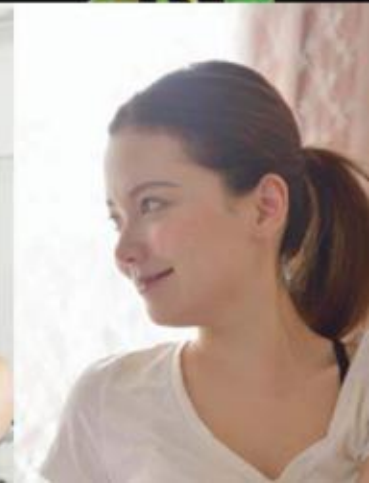
## Design Direction

### Wellness In Full Blossom

Inspired by the blossoming action of flowers, the new Kinohimitsu brand design aims to visually communicate how our products/services has the ability to enhance your wellness to its fullest potential.



# WELLNESS IN FULL BLOOM



Photography featured in this page may not be reproduced in part or in whole as part of any external communication.

## Bloom Brand Graphic

The Kinohimitsu Bloom is the new signature asset of the brand. The creation of the Bloom is inspired by the blooming motion of flowers. Its dynamic colour gradients and impressions of movement represent the amplification on an individual's wellness through Kinohimitsu.

Elements of the full Bloom graphic are also deconstructed to represent each of the brand's product categories and used for category communications and packaging only.

This is a key asset that Kinohimitsu may leverage on to spur interest and add vibrance to the brand. This may be captured across various media formats. The full Bloom graphic is used either in key environment designs or applied across overarching marketing and advertising communications.



## Colour Palette

The Kinohimitsu colour palette is derived from the Bloom. By using our colour palette single-mindedly and consistently across our communication, we aim to own this colour combination to establish brand recognition in the minds of consumers.

There are three colour segmentations in the Kinohimitsu colour palette:

### 1. Primary colours.

The secondary colours: Kino grey and white.

- Kino grey is used for the logo, tagline and copy for all marketing communications collaterals, except headlines.
- White is used for the logo where there is a requirement to print the logo against a dark background. It is also used as the background colour for packaging and marketing communications collaterals.

### 2. Secondary colours

These colours represent the Kinohimitsu Brand architecture. This will be applied on the product's packaging and secondary communications pertaining to category-specific communication initiatives.

### 3. Tertiary Colours

The tertiary colours are used to support the primary colours, where needed. To date, this has been used to depict product categories as solid colours used in the packaging for enhanced clarity. For special and/or season communications, the colour silver is also used.

While the use of the tertiary colours are currently limited and is recommended to be used sparingly, this do not cover every eventuality of our brand communications and if needed, necessary directions on how it may be used will be added, approval for which will be issued by the Kinohimitsu Marketing team.

### 1. Primary Colours



**WHITE**  
RGB  
R255 G255 B255  
CMYK  
C00 M00 Y00 K00



**KINO GREY**  
RGB  
R49 G49 B51  
CMYK  
C00 M00 Y00 K90

### 2. Secondary Colours (Category)



**DETOX GREEN**  
**PANTONE® 357 C**  
RGB  
R31 G87 B51  
CMYK  
C85 M40 Y91 K38



**BEAUTY PURPLE**  
**PANTONE® 2597 C**  
RGB  
R92 G43 B133  
CMYK  
C79 M100 Y7 K3



**HEALTH ORANGE**  
**PANTONE® 1645 C**  
RGB  
R240 G122 B78  
CMYK  
C0 M63 Y70 K0



**FITNESS TEAL**  
**PANTONE® 5483 C**  
RGB  
R78 G134 B142  
CMYK  
C73 M35 Y40 K5



**KIDS RED**  
**PANTONE® 7417 C**  
RGB  
R232 G76 B56  
CMYK  
C3 M86 Y85 K0



**MEN BLUE**  
**PANTONE® 2765 C**  
RGB  
R32 G21 B69  
CMYK  
C96 M99 Y38 K45

### 3a. Tertiary Colours (Product)



**PANTONE® 156 C**  
RGB  
R242 G189 B123  
CMYK  
C4 M28 Y58 K0



**PANTONE® 564 C**  
RGB  
R132 G200 B188  
CMYK  
C48 M3 Y30 K01



**PANTONE® 579 C**  
RGB  
R191 G208 B155  
CMYK  
C27 M7 Y47 K0



**PANTONE® 297 C**  
RGB  
R113 G197 B231  
CMYK  
C51 M5 Y3 K0



**PANTONE® 257 C**  
RGB  
R200 G160 B200  
CMYK  
C14 M34 Y0 K0



**PANTONE® 617 C**  
RGB  
R194 G182 B96  
CMYK  
C27 M22 Y76 K0

### 3b. Tertiary Colours (Promotion)



**PANTONE® SILVER 10101 C**  
RGB  
R204 G202 B202  
CMYK  
C15 M12 Y13 K0

## Tone of Voice

The tone of voice helps Kinohimitsu navigate the way it communicates in words.

Based on the brand platform individual values, please ensure when writing for the new Kinohimitsu brand, the tone of voice must sound like 1 or more of the following.

### 1 ASSURED

Rigorously tested ingredients which safely and effectively extends your wellness threshold.

### 2 NATURAL

We are constantly finding the best nature has to offer. We only use responsibly sourced ingredients.

### 3 UPLIFTING

Motivating, encouraging and rewarding you for taking control of your wellness.

### 4 PROGRESSIVE

A passionate commitment to continuous improvement in our products & services.

1. Celebrity endorsement



2. Merchandise endorsement



3. Promotion



## Photography Look & Feel - Guide

Our overall photography style is pure. It communicates our brand's social values of helping people feel happier, healthier and more confident in their bodies and in their lives everyday.

Below are the key techniques used in our photography style:

### Environment

Indoors - photography studio  
Over a white background

### Lighting

Controlled white light

### Camera Angles

Eye level



Photography featured in this page may not be reproduced in part or in whole as part of any external communication.

## Photography Look & Feel - People

### WOMEN

#### Appearance

Radiant skin, neat hair and vibrant eyes

#### Mood

Confident, happy, positive and taking control

#### Attire

Simple, modest, neutral coloured and no accessories



### MEN

#### Appearance

Neat short hair, clean shave and healthy skin tone

#### Mood

Confident, happy, positive and taking control

#### Attire

Casual smart, modest and neutral coloured



### CHILDREN

#### Appearance

Natural look, big smiles, healthy skin tone

#### Mood

Happy, fun and energetic

#### Attire

Simple, neat and neutral coloured

Photography featured in this page may not be reproduced in part or in whole as part of any external communication.





## Photography Look & Feel - Product

Our products are the center of our brand. They should always be the key focus on all our collaterals. Our product photography is bold and proud.

KINOHIMITSU  
**LAURA MORTON'S  
KINO PLAN**

KINOHIMITSU  
**GLOW**  
DESCRIPTOR

KINOHIMITSU  
**CLEAR**  
DESCRIPTOR

KINOHIMITSU  
**BOOSTER**  
DESCRIPTOR

DISCOVER YOUR KINO PLAN TODAY.

>Lorem ipsum dolor sit amet, consectetur adipiscing elit, in suscipi  
gravitate magna nec congue. Aenean pretium magna dui, eget  
voluta nulla facilis eget. Ut cras in enim dapibus libero, molestie  
Nunc aliquam sem quis suscipi sodales.

[www.kinohimitsu.com](#) [www.kinohimitsu.com](#)

## Photography Look & Feel - Restrictions

To ensure that we achieve a consistent look through our photography. Avoid using these restricted photography styles that does not aligns to our brand.

### Do not's



**Do not** apply other photography lighting techniques



**Do not** use non pan-asian talent



**Do not** use photography that are visually too busy and colourful.



**Do not** apply the photography subject in unrealistic context



**Do not** add graphic effects on photography subject



**Do not** use cliché photography

Photography featured in this page may not be reproduced in part or in whole as part of any external communication.

# PACKAGING DESIGN TEMPLATES

## Kinohimitsu Packaging Overview

The new Kinohimitsu visual identity system will be implemented across the primary and secondary packaging design of Kinohimitsu products.

The logo word mark will be incorporated against a white background. The product-category specific section of the Bloom has been selected and incorporated in the packaging design.

The tertiary colours in the colour palette are adapted to serve as key visual cues to differentiate the Kinohimitsu products within the category.

Used consistently and boldly, these elements will help to build a powerful and distinctive brand. Please do not change, replace or modify any of the elements as this will dilute the impact of our brand.



## Kinohimitsu Packaging Design Principle

The Kinohimitsu packaging design consists of three design principles:

### 1. Bloom Graphic

The Bloom graphic has been developed as a multi-layered master artwork that is designed to provide designers creative freedom to morph, scale, skew and subtract layers to create a unique, ownable design for each packaging requirement across the Kinohimitsu product categories.

### 2. Product Typography Style

The individual product variants use Placard MT Condensed and Century Gothic to ensure that the personality and identity of each product variant maintains its affinity with Kinohimitsu's overall look and feel.

### 3. Colour Application

These colours represent the Kinohimitsu Brand architecture. The colours that are derived from the Bloom graphic are applied on the product's packaging and secondary communications pertaining to category-specific communication initiatives.



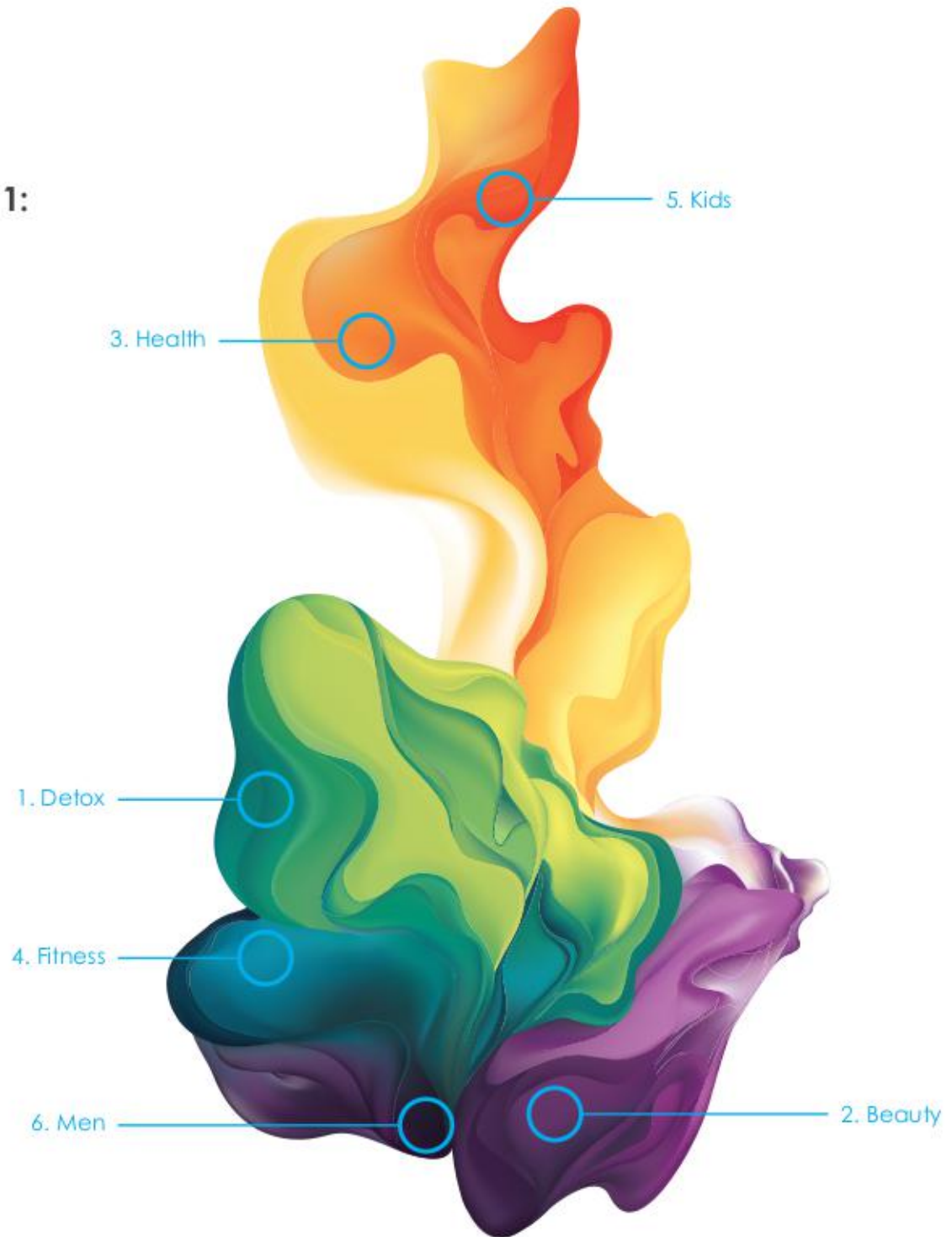
## Kinohimitsu Packaging Design Principle 1: Bloom Graphic

Kinohimitsu's product categories and its shade representation in the graphic are as follows:

1. Detox represented by the shade of green
2. Beauty represented by the shade of purple
3. Health represented by the shade of orange
4. Fitness represented by the shade of teal

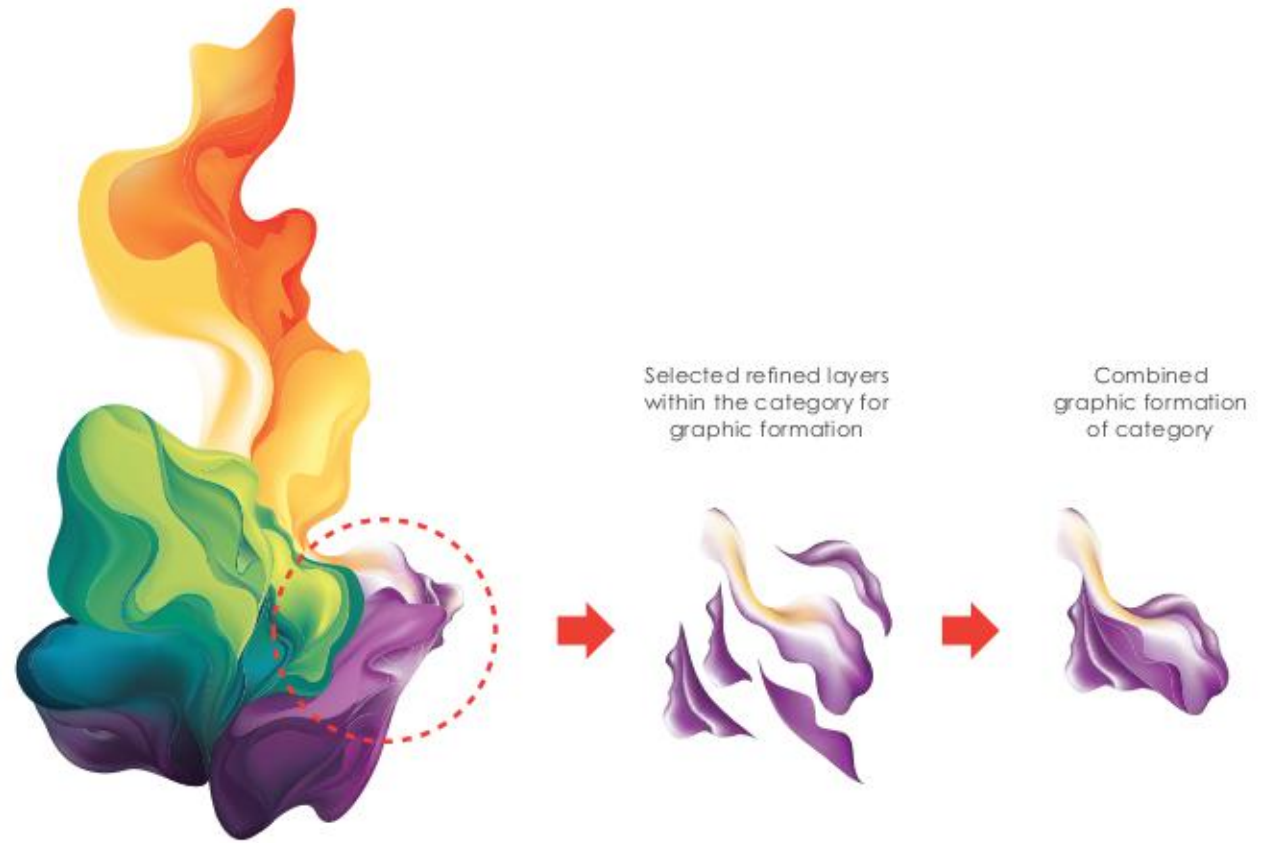
Two key alternative consumer segments are also represented in the Bloom graphic:

5. Kids represented by the shade of red
6. Men represented by the shade of blue



## Packaging Design Formation Principle 1: Bloom Graphic Design Formation

The Bloom graphic may be morphed, scaled, skewed and layers may be subtracted within the colour category shade to create distinct graphic formations for each product variant within the same category. It is used in any angle of the Bloom graphic formation.



### Cropping

The Bloom graphic formation can be scaled up or down within the cropping area

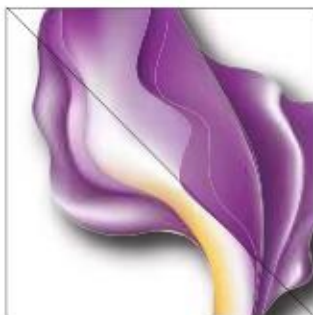


## Packaging Design Formation Principle 1: Bloom Graphic Design Formation Restrictions

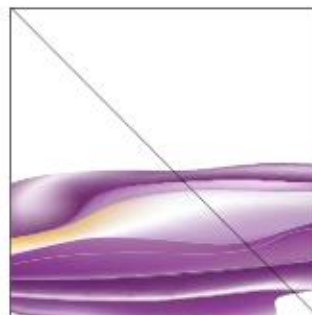
While the Bloom graphic for the packaging design of each product within the same category may morph, scale, skew and subtract layers to create a unique, ownable design, these design adaptations must maintain a distinct, clear and premium look and feel. The Bloom orientation must not be distorted or infused with any additional design elements.

The Marketing team will provide the master artwork of each product variant that will be used for the packaging design for each product. Please do not change, replace or modify any of these Bloom master artworks for packaging as this will dilute the impact of our brand.

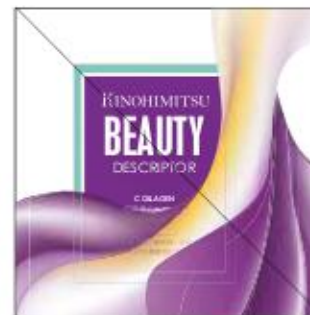
### Do not's



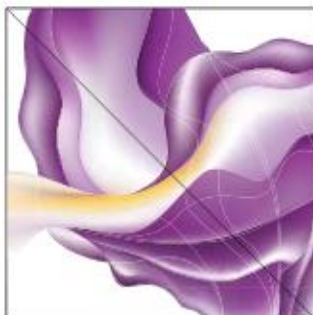
**Do not** add effects like drop shadows, gradients etc.



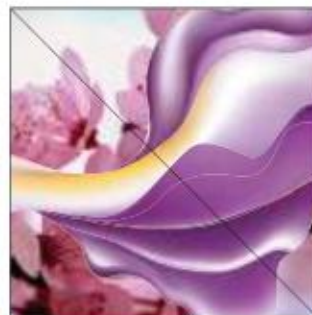
**Do not** distort the blossom brand graphic.



**Do not** obscure messaging or make messaging illegible in any way.



**Do not** use more than one blossom graphic at the same time.



**Do not** place the blossom graphic over photographic backgrounds.



**Do not** make the blossom graphic transparent or opaque.



## Packaging Design Formation Principle 2: Product Typography Style

The typeface Placard MT condensed will be used for category headline and Century Gothic will be used for product variant/descriptor.

Using the height of the letter K of the Kinohimitsu logo, the following proportions guides the layout of the product typography style.

The category headline should be

These proportions should always be followed closely. Should there be any need to for adjustments, please consult the Kinohimitsu Marketing team.

X

0.7X

3.15X Placard MT Condensed

0.7X

0.7X or X Century Gothic Regular

K X = Height of letter K

KINOHIMITSU  
**VICTORY**  
BEAUTY COLLAGEN

## Packaging Design Formation Principle 3: Colour

Using the beauty category as a point of reference, below is the adaptation of the purple shade of the Kinohimitsu Bloom graphic for various product variants within the same category.

The tertiary colour palette is used to enhance differentiation of each product variant within the same category.

For more recommended colours, please refer to the **Colour Palette** section.

**Product Colour Band**  
Use to differentiate bottle design within category

**Category Colour Band**  
Use to differentiate product range among other categories



## Packaging Design: Bloom graphic for a bottle and box of the same variant.

The flexibility of the Bloom graphic to adapt a unique and distinct look while maintaining a strong product category association is presented here. Note the difference in the orientation and skewed variation of the shade of the Bloom graphic between the section used for the bottle and the box. While the graphic orientation variation is apparent, the colour shades and morphing selected between the bottle and box are consistent, establishing a consistent look and feel between the bottle and the box.

This design has been crafted with careful management of the Bloom graphic master artwork. The Bloom should only be adapted from the master artwork and should not be redrawn or altered in any way.

Subject to product category and market specific regulatory requirements, copy may be updated. Please note that these updates will be developed only by the Kinohimitsu Marketing team and/or appointed partners. Due to consideration for local trade regulations, please do not change, replace or modify any of these updatable elements of the both the primary and secondary packaging, without written directive and final artwork approval from the Kinohimitsu Marketing team.

All updates in the master artwork for each product will be done only by Kinohimitsu Marketing team and/or its appointed supplier. If any of the brand's stakeholders would require access to these designs, the master artwork is provided in a digital format and is to be secured only from the Kinohimitsu Marketing team.

## Bottle Packaging

Colour Coded Bloom Formations: Category Wayfinding Device



## Box Packaging

Organic Bloom Formations: Fluid & Adaptive



## Brand Graphic - Secondary Usage

### Principles for Packaging Design: Bottles

The primary packaging design for these Kinohimitsu products were developed with the strategic consideration of the brand platform and the functional requirement of providing an additional layer of protection to the product.

Kinohimitsu functional drinks are packaged in 50ml medical grade bottles to ensure freshness and quality.

Thus, the primary packaging design is implemented as a full plastic shrink-wrapped label design with a crown perforation. This creates an opportunity to optimise the branding and integration of the Bloom graphic onto the label and at the same time, serve as an additional protection against UV light.

The logo is implemented in Kino grey.  
The Bloom graphic is deconstructed to morph a shade of the category  
The typeface Placard MT Condensed will be used for category headline and Century Gothic will be used for product variant/descriptor.  
The tertiary colour palette is used a ring at the base of the design to enhance differentiation of products within the same category.

While the Bloom graphic for each product within the same category may morph, scale, skew and subtract layers to create a unique, ownable design for packaging design, these changes are subject to approval by the Marketing team.

Colour is an important element of Kinohimitsu's visual identity system that when applied appropriately, reinforces brand recognition. Please ensure that the correct colourway is used across all packaging applications at all times.

### Bottle Packaging: Shrink Wrap

Colour Coded Bloom Formations: Category Wayfinding Device



### Bottle Packaging: Label only



50 ml

## Bottle Design - Surface Graphic Specifications

### Shrink wrap

The flexibility of the Bloom graphic to adapt a unique and distinct look while maintaining a strong product category association is presented here. Note the difference in the orientation and skewed variation of the purple shade of the Bloom graphic between the section used for the bottle and the box. While the graphic orientation variation is apparent, the colour shades and morphing selected between the bottle and box are consistent, establishing a consistent look and feel between the bottle and the box.

This design has been crafted with careful management of the Bloom graphic master artwork. The Bloom should only be adapted from the master artwork and should not be redrawn or altered in any way.

Subject to product category and market specific regulatory requirements, copy may be updated. Please note that these updates will be developed only by the Kinohimitsu Marketing team and/or appointed partners. Due to local trade regulations, please do not change, replace or modify any of these updatable elements of the both the primary and secondary packaging, without written directive and final artwork approval from the Kinohimitsu Marketing team.

All updates in the master artwork for each product will be done only by Kinohimitsu Marketing team and/or its appointed supplier. If any of the brand's stakeholders would require access to these designs, the master artwork is provided in a digital format and is to be secured only from the Kinohimitsu Marketing team.

### Brand Graphic

#### Use To Differentiate Bottle Design Within Category

For more guidance on how to use the Brand Graphic, please refer to page 24.



### Product Colour Band

#### Use To Differentiate Bottle Design Within Category

For more recommended colours, please refer to the section on color definition in page 14 and use the supplementary colour range.

## 50 ml Collagen Diamond Bottle Design - Flat Pack Print Specifications

Shrink wrap

### Bottle Label Design

The final artwork files of the flat pack design has been created. To request for this files, please contact the Marketing team.

### Print Specifications

#### Label Material

##### Plastic Shrink Wrap

1. High gloss white paper with slight pearlescent finishing

#### Bottle Material

1. Medical grade bottles - Brown



## 50 ml Collagen Diamond Label Design - Flat Pack Print Specifications

### Bottle Label Design

The final artwork files of the flat pack design has been created.  
To request for this files, please contact the Marketing team.

### Print Specifications

#### Label Material

1. High gloss white paper with slight pearlescent finishing

#### Bottle Material

1. Medical grade bottles - Brown



## 50 ml Collagen Diamond Bottle Design - Surface Graphic Specifications

- 1 Brand Graphic
- 2 LogoType
- 3 Product Name
- 4 Descriptor
- 5 Product Colour Band
- 6 Category Colour Band



Label



Shrink wrap



50 ml

## Bottle Design - Surface Graphic Specifications

Shrink wrap

An example of the full range of surface graphic design for the 50 ml bottle design



## Brand Graphic - Secondary Usage

### Principles for Packaging Design: Boxes

Kinohimitsu functional drinks in 50ml bottles are packaged in boxes of 6 units or 16 units. Thus, the design is implemented as a sturdy carton box. This creates an opportunity to optimise the branding and integration of the Bloom graphic onto the box labels and at the same time, serve as a cost-efficient way to purchase the product in bulk.

The logo is implemented in White.

The Bloom graphic is deconstructed to morph a shade of the category. The typeface Placard MT Condensed will be used for category headline and Century Gothic will be used for product variant/descriptor. The tertiary colour palette is used as a border of the inner box label to enhance differentiation of products within the same category.

While the Bloom graphic for each product within the same category may morph, scale, skew and subtract layers to create a unique, ownable design for packaging design, these changes are subject to approval by the Marketing team.

Colour is an important element of Kinohimitsu's visual identity system that when applied appropriately, reinforces brand recognition. Please ensure that the correct colourway is used across all packaging applications at all times.

## Box Packaging

Organic Bloom Formations: Fluid & Adaptive



## 50 ml Collagen Diamond Box Design - Surface Graphic Specifications

Shrink wrap

- 1 Bottle Graphic
- 2 Brand Graphic
- 3 Product Colour Band
- 4 Product Label Real Estate
- 5 Product Quantity



### Product Labelling Real Estate Content Hierarchy



### Product Colour Band Use To Differentiate Packaging Within Category



For more recommended colours, please refer to the section on color definition (page 11) and use the supplementary colour range.

### Product Labelling Real Estate Layout Options



With Mandarin  
Product Name

Without Mandarin  
Product Name

## 50 ml Collagen Diamond Box Design - Flat Pack Print Specifications

### 16 Bottle Box Design

The final artwork files of the flat pack design has been created. To request for this files, please contact the Marketing team.

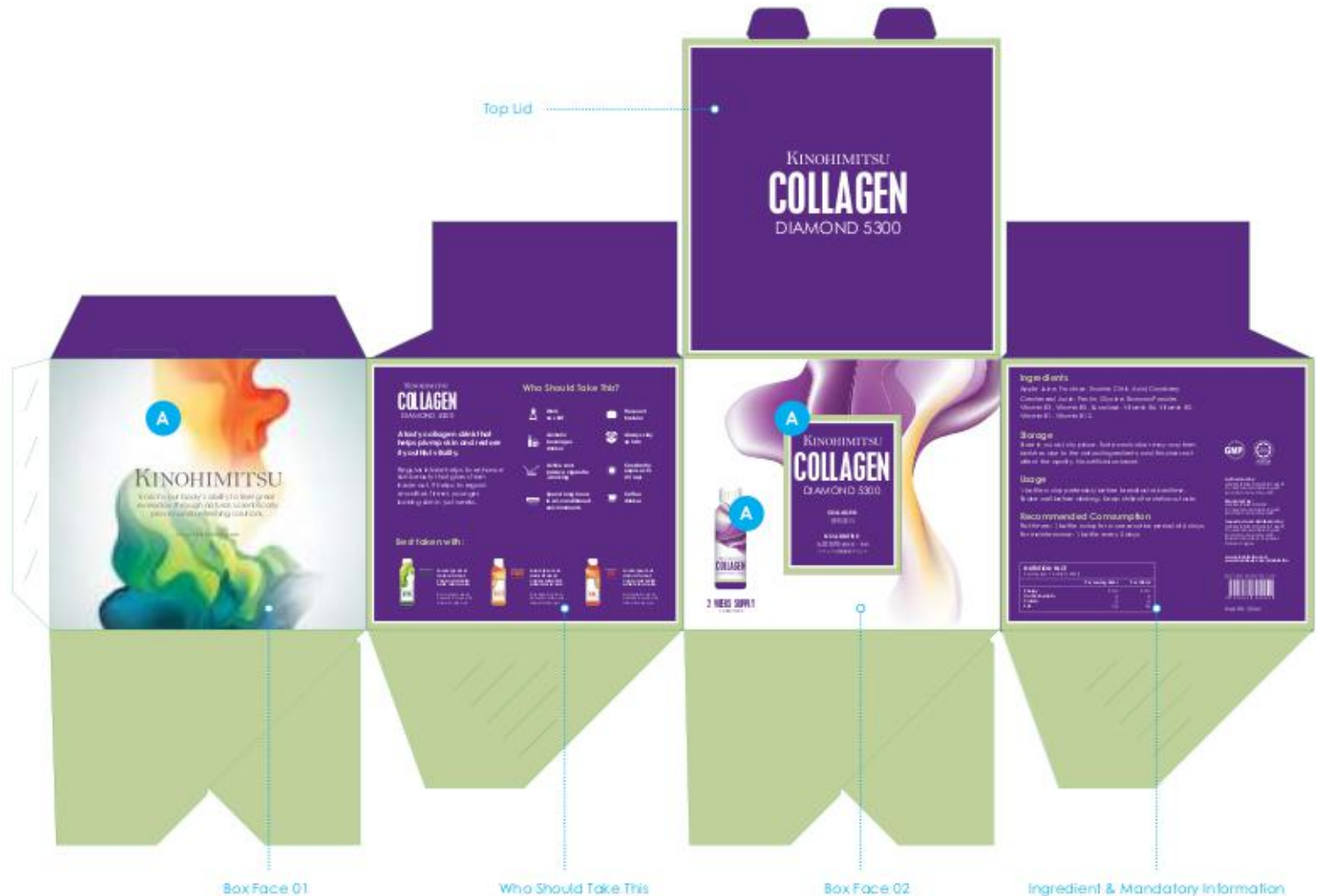
### Print Specifications

#### Material

1. Outer: High gloss white paper with slight pearlescent finishing
2. Inner: White colour corrugated board

#### Print Finishing

A) Spot UV varnish on the product label real estate & bottle graphic

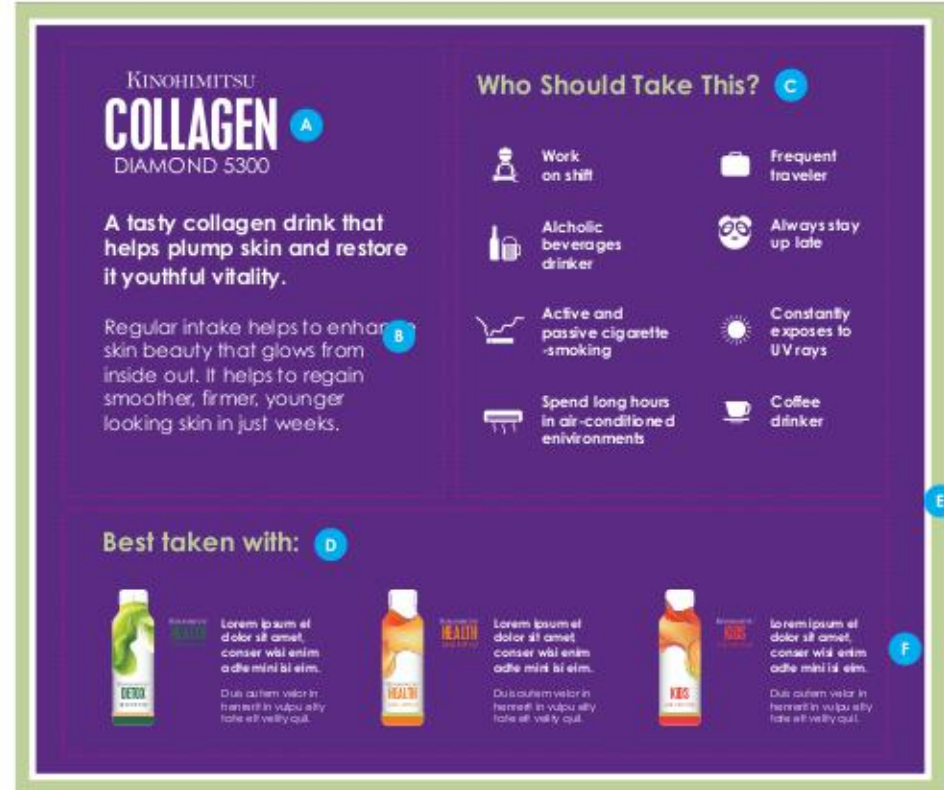


## 50 ml Collagen Diamond Box Design - Flat Pack Specifications



### Fixed content

- To include:
- A) Brand name
  - B) Brand story
  - C) Website



### Updatable content

- To include:
- A) Brand and product name lockup
  - B) Product benefits
  - C) Product usage
  - D) Feature products (no more than 3 products)
  - E) Product colour
  - F) Category colour

\*Always keep content within the box

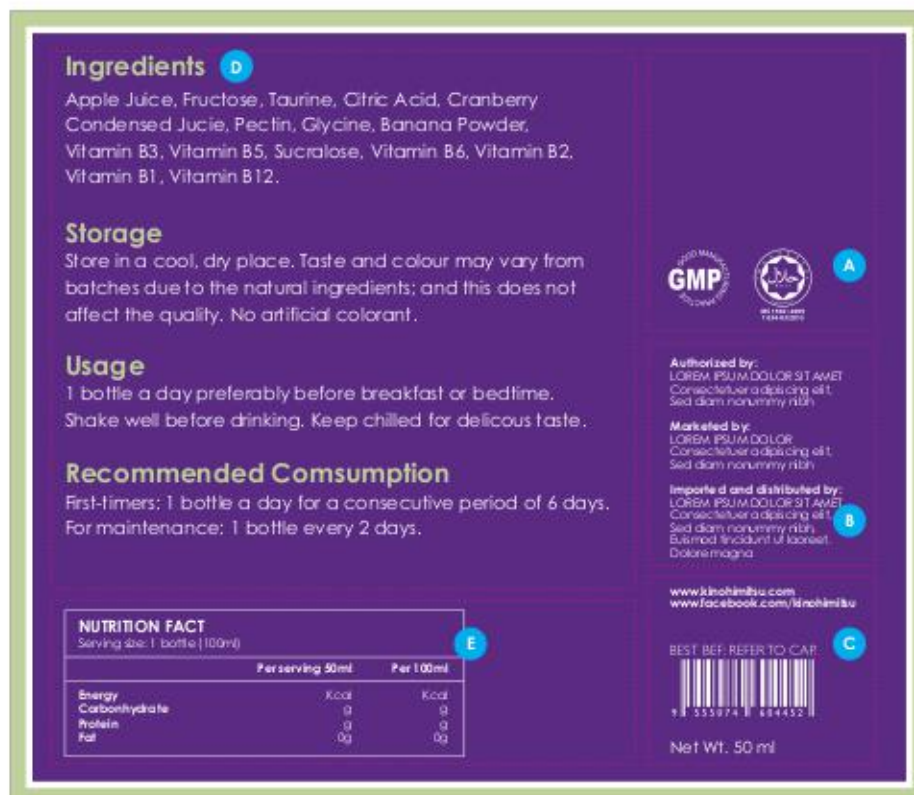
## 50 ml Collagen Diamond Box Design - Flat Pack Specifications



### Updatable content

To include:

- A) Brand and product name lockup
- B) Product benefits
- C) Product quantity
- D) Feature bottle
- E) Product colour
- F) Category colour
- G) Bloom graphic



### Updatable content

To include:

- A) Certification and license
- B) List distributor, marketer and authorizer
- C) Online (website, facebook page), barcode and net weight
- D) Ingredients, storage, usage and recommended consumption
- E) Nutrition fact

## 50 ml Collagen Diamond Box Design - Flat Pack Specifications



### Updatable content

To include:

- A) Brand and product name lockup
- B) Product colour
- C) Category colour

## 50 ml Collagen Diamond Box Design with promotional label - Flat Pack Print Specifications

### 16 Bottle Box Design

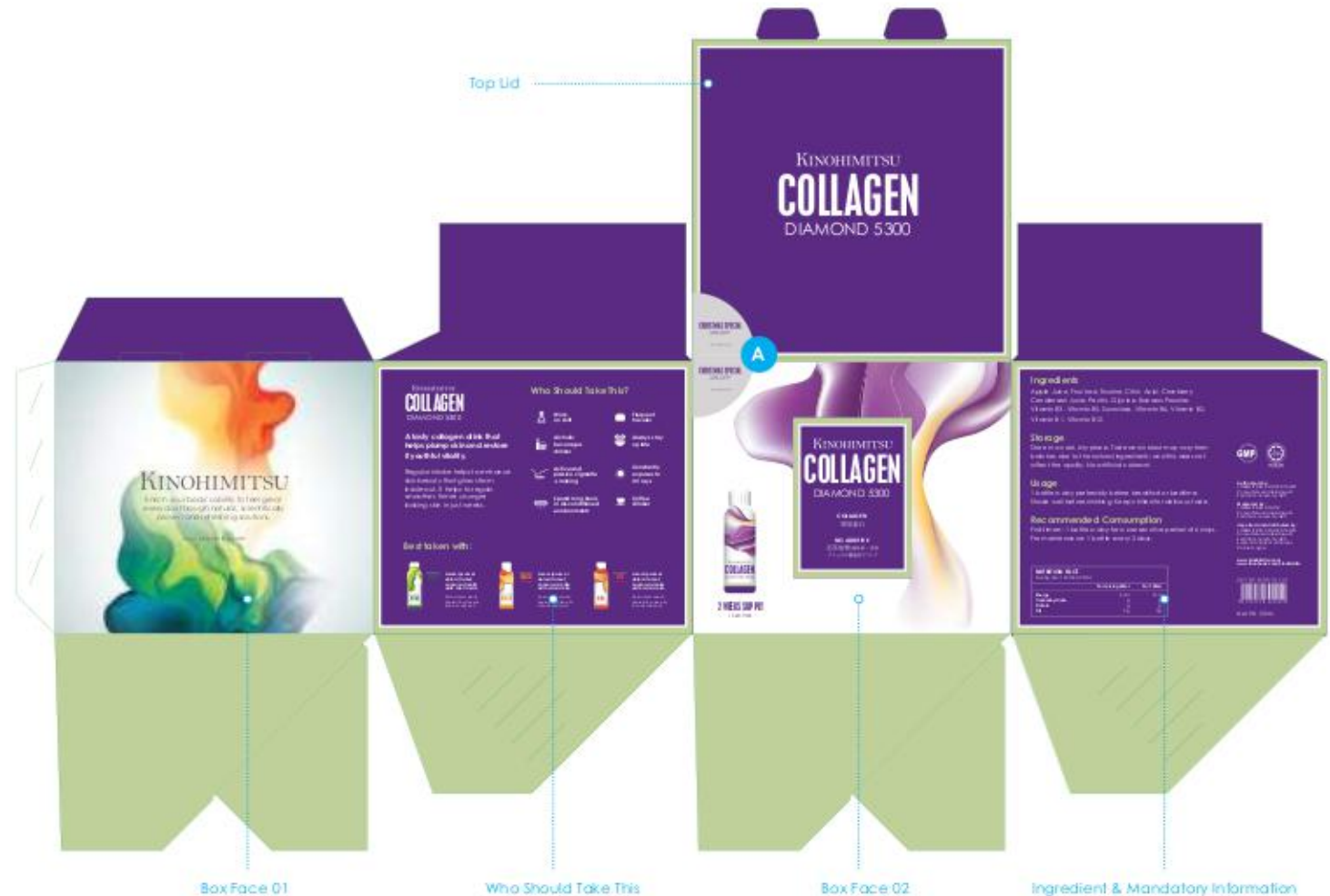
The final artwork files of the flat pack design has been created. To request for this files, please contact the Marketing team.

### Print Specifications

#### Print Finishing

A) Semi circle sticker printed and placed on top lid and box face

Base colour: Pantone Silver 10101C  
Text colour: Category colour  
Example; Beauty purple Pantone 2597C





## 50 ml Collagen Diamond Box Design with promotional label - Flat Pack Specifications

### Updatable content

To include:

A) Promotional label in Pantone silver 10101C



## 250 ml Bottle: Full Shrink-Wrap - Surface Graphic Specification

- 1 Brand and product name lockup
- 2 Brand Graphic
- 3 Product Colour Band



## 250 ml Bottle: Shrink-Wrap Specification

### Updatable content

To include:

- A) Brand and product name lockup
- B) Bloom graphic
- C) Product colour
- D) Product benefits
- E) Ingredients, storage, usage and recommended consumption
- F) Nutrition fact
- G) Certification and license
- H) List distributor, marketer and authorizer
- I) Barcode and net weight



## 250 ml Bottle: Shrink-Wrap - Print Specification

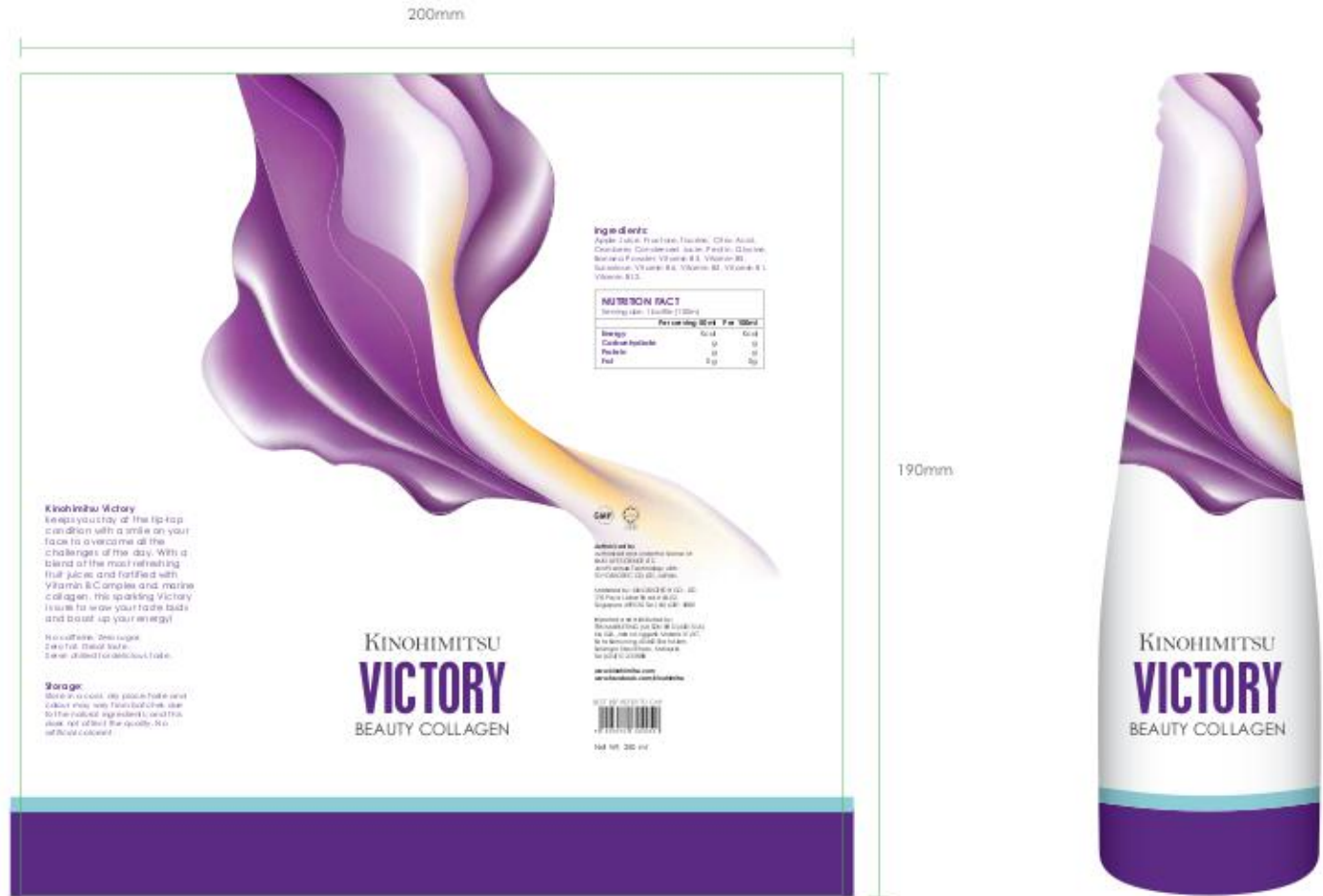
### Shrink-Wrap Design

The final artwork files has been created.  
 To request for this files, please contact  
 the Marketing team.

### Print Specifications

#### Material

1. High gloss plastic shrink sleeve label material with pearlescent finishing



## Kinohimitsu Packaging Design Principle: Powder Formulation - Surface Graphic Specification

- 1 Brand and product name lockup
- 2 Brand Graphic
- 3 Product Colour Band

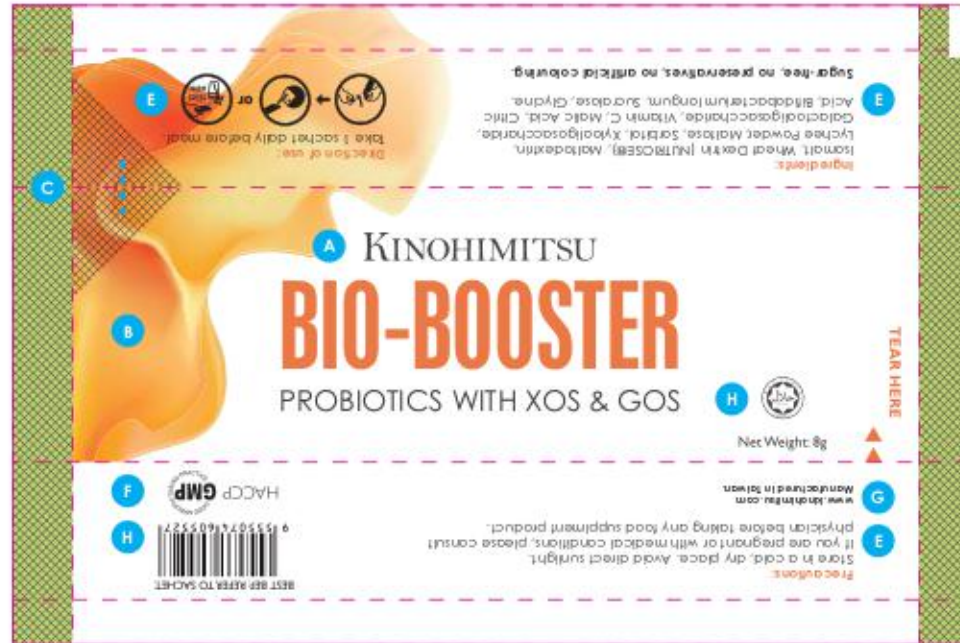


## Bio-Booster 10g Sachet Design Specifications

### Updatable content

To include:

- A) Brand and product name lockup
- B) Bloom graphic
- C) Product colour
- D) Product benefits
- E) Ingredients, storage, usage and recommended consumption
- F) Certification and license
- G) Online (website), Manufactured location
- H) Barcode and net weight



## Bio-Booster 10g Sachet Design - Print Specifications

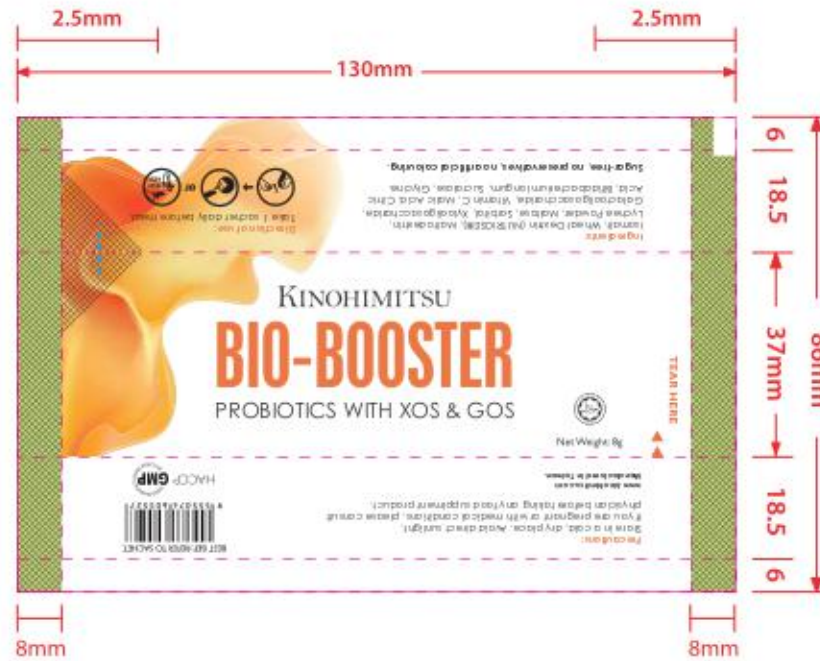
### 10g Sachet Design

The final artwork files has been created.  
To request for this files, please contact  
the Marketing team.

### Print Specifications

#### Material

Aluminium Foil Bag



## Bio-Booster Tin Can Design - Print Specifications

### Tin Box Design 1/2

The final artwork files has been created.  
To request for this files, please contact  
the Marketing team.

### Print Specifications

#### Material

1. High gloss white paper with slight pearlescent finishing

#### Print Finishing

1. Spot UV varnish on wordmark (front face) and blossom graphic
2. Debossed wordmark (tin cover)





## Bio-Booster Tin Can Design - Print Specifications

### Tin Box Design 2/2

The final artwork files has been created.  
To request for this files, please contact  
the Marketing team.

### Print Specifications

#### Material

1. High gloss white paper with slight  
pearlescent finishing

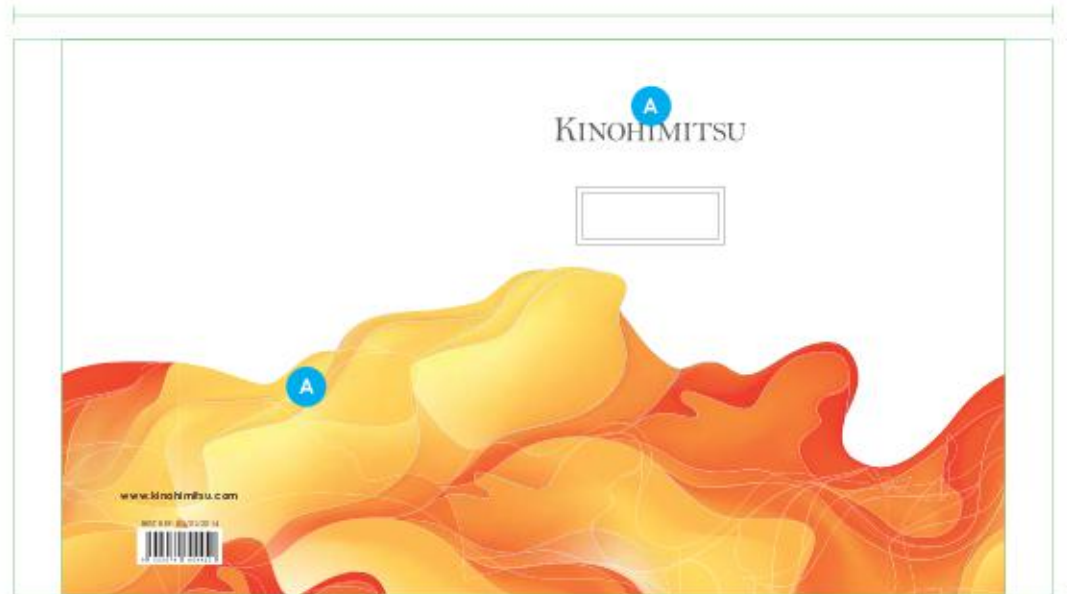
#### Print Finishing

1. Spot UV varnish on wordmark (front  
face) and blossom graphic

2. Debossed wordmark (tin cover)

A

B



# COLLATERAL DESIGN TEMPLATES

## Introduction - Key Graphic Elements Principles for Collateral Design

The following graphic elements work together in harmony to create the Kinohimitsu visual identity.

### Kinohimitsu Logo and Tagline Lock-up

The Kinohimitsu logo and tagline lock-up should be used for all our brand and marketing communications.

### Kinohimitsu Grid

The Kinohimitsu Grid defines the structure for the content and our various brand elements for all our brand and marketing communications.

### Bloom Graphic

The Bloom graphic is our primary graphic element. It is usually applied together with a featured model or product to highlight the main subject on the collateral.

### Bloom Band

The bloom band graphic is our secondary visual element. It is mainly applied on applications with heavier content where space is limited.

### Signature Footer / Graphic Divider

Contact information or any general information are placed within the signature footer to prioritise the primary content. When the Bloom band is applied together with the arc of the footer, it can also be used as a graphic divider to separate content.

### Gradient Background

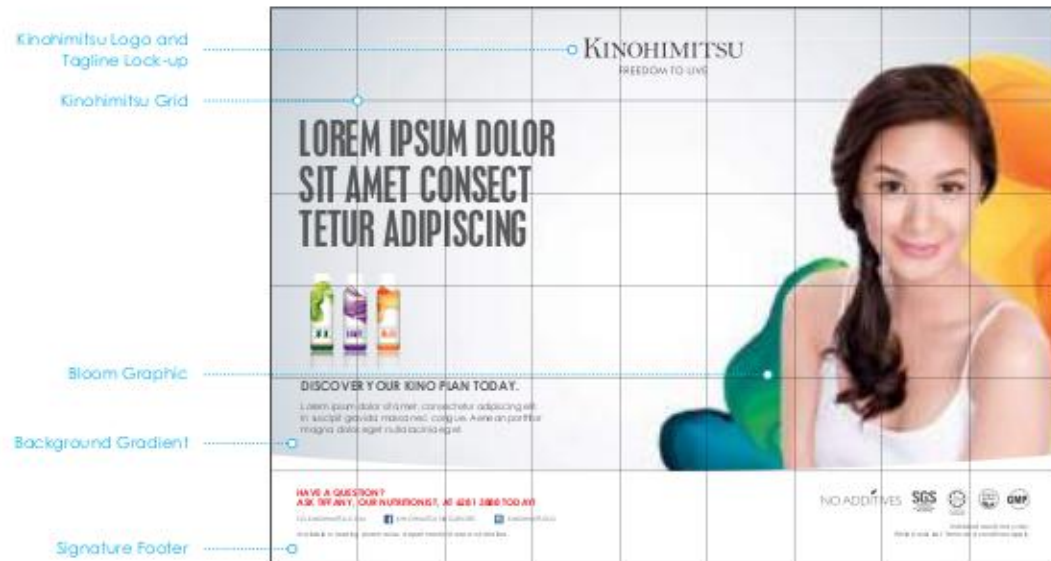
The gradient background should be applied to all brand and marketing communications.

Please do not change, replace or modify any of these Bloom master artworks as this will dilute the impact of our brand.

All updates in the master artwork for the Bloom graphic and band will be done only by Kinohimitsu Marketing team and/or its appointed supplier. If any of the brand's stakeholders would require access to these designs, the master artwork is provided in a digital format and is to be secured only from the Kinohimitsu Marketing team.

### For Brand Communications

Kinohimitsu Grid with Bloom Graphic



### For Marketing Communications

Kinohimitsu Grid with Bloom Band



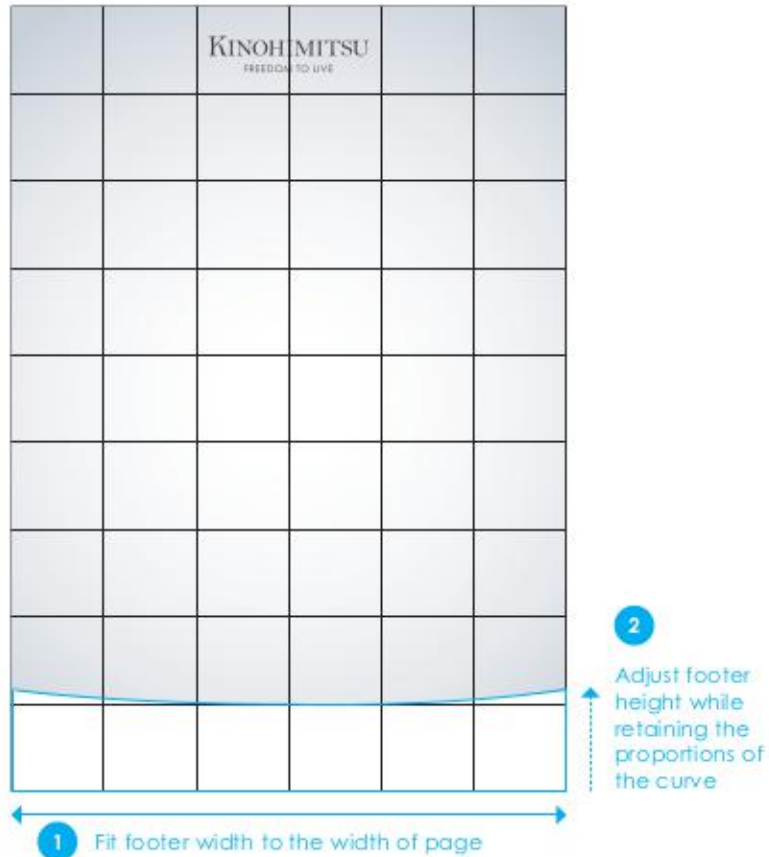


## Kinohimitsu Grid - Signature Footer Construction for Collateral Design

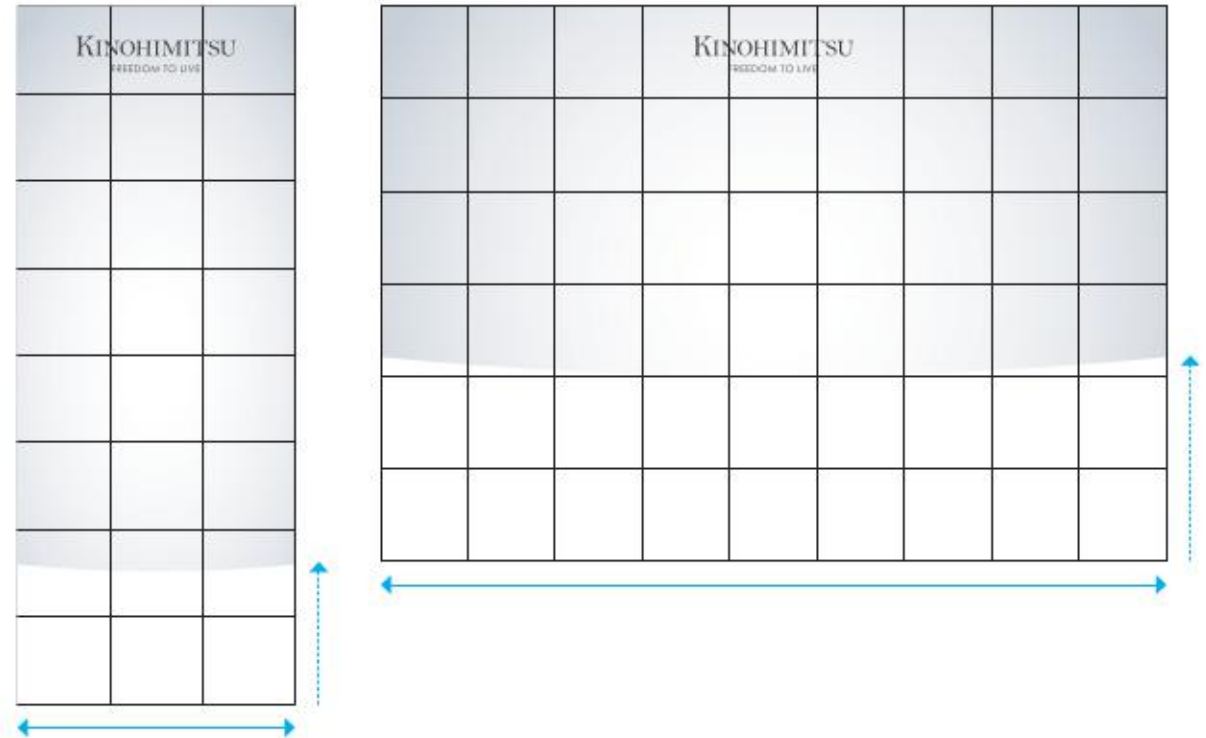
The signature footer is a graphic device that works with the Kinohimitsu Grid to help create hierarchy and structure to the content in the communications.

The following illustrations demonstrate how to adapt the signature footer on different formats.

Kinohimitsu Grid - Signature Footer



On other formats



## Bloom Graphic - Primary Usage For Brand Communications

The Bloom graphics have been setup as fluid freeform graphics that gives you the creative freedom to morph, scale, skew & subtract layers to create a unique design each time you are creating a new piece of collateral.

The following illustrations demonstrate the various usages of the Bloom graphic with the content for brand communications.

1. Bloom graphic used as a stand-alone design  
(For exceptional implementation only)



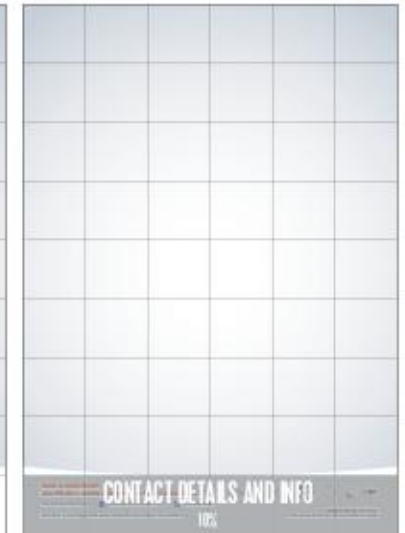
2. Bloom graphic integrated with a lifestyle photography,  
that may be adapted for celebrity endorsements.



The Bloom graphic is to be presented in full colour version only.

## Kinohimitsu Grid with Bloom Graphic - Portrait Layout Principles

Below is an example of how design ratio is used for marketing materials.



### Primary content

In this example, the Bloom graphic and the lifestyle photography are the primary focus, occupying 45% of the overall ratio.

### Secondary content

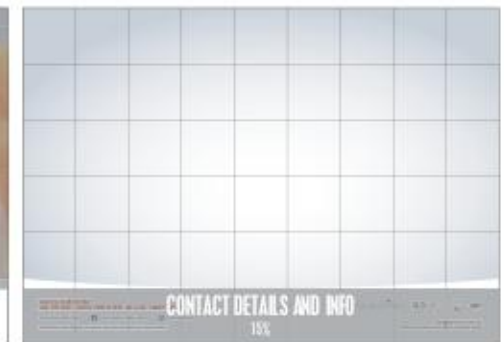
The content has a secondary focus, occupying 30% of the overall ratio and has to be left aligned together with the products.

Contact details and other information should be placed in the signature footer occupying 10% of the overall ratio.

*In some cases if the headline is the primary focus, occupying at least 50% of the overall ratio, it has to be centre aligned.*

## Kinohimitsu Grid with Bloom Graphic - Landscape Layout Principles

Below is an example of how design ratio is used for marketing materials.



### Primary content

In this example, the Bloom graphic and the celebrity photography are the primary focus, occupying 45% of the overall ratio.

### Secondary content

The content has a secondary focus, occupying 30% of the overall ratio and has to be left aligned together with the products.

Contact details and other information should be placed in the signature footer occupying 15% of the overall ratio.

*In some cases if the headline is the primary focus, occupying at least 50% of the overall ratio, it has to be centre aligned.*



## Kinohimitsu Grid with Bloom Graphic - Landscape Layout Principles (Centre Spread)

Below is an example of how design ratio is used for marketing materials.



### Primary content

In this example, the Bloom graphic and the celebrity photography are the primary focus, occupying 45% of the overall ratio.

### Secondary content

The content has a secondary focus, occupying 30% of the overall ratio and has to be left aligned together with the products.

Contact details and other information should be placed in the signature footer occupying 15% of the overall ratio.

*In some cases if the headline is the primary focus, occupying at least 50% of the overall ratio, it has to be centre aligned.*

## Bloom Band Graphic - Secondary Usage For Marketing Communications

The Bloom band graphic is a cropped version of the Bloom graphic. It creates a stronger distinction as a divider or a signature footer on collaterals that carries more content.

The following illustrations demonstrate the various usages of the Bloom band graphic with the content for marketing communications.

### 1. Bloom band graphic as a graphic divider

Full Colour Version



Grey scale Version



R49 G49 B51  
C0 M0 Y0 K90

The Bloom band is recommended to be used in full colour version, however, if needed for printing purposes, a grey scale format may be used.

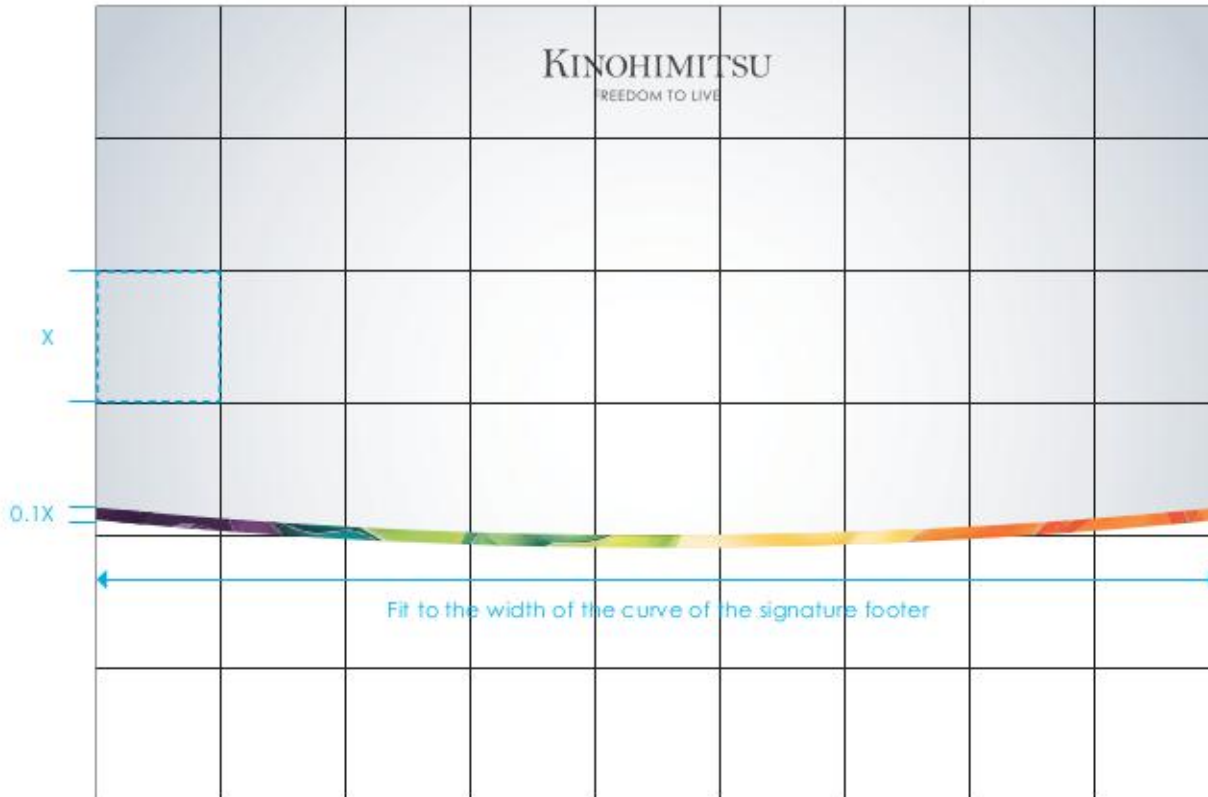
### 2. Bloom band used as a signature footer



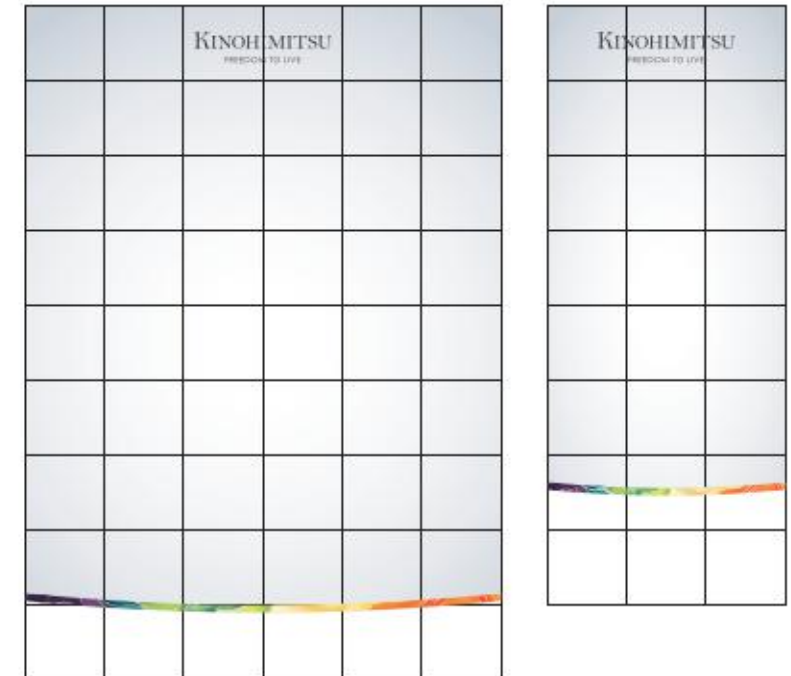
## Bloom Band - Secondary Usage Construction for Collateral Design

The Bloom band is an additional graphic that aligns to the arc of the signature footer. It proportionately adapts to the width of the signature footer. To ensure the Bloom band maintains its visual impact across different formats, the height of the Bloom band is adjusted to at least 1/10 the height of a single box in the Kinohimitsu grid.

Bloom band with signature footer



On other formats



## Kinohimitsu Grid with Bloom Band - Portrait Layout Principles

Below is an example of how design ratio is used for marketing materials.



### Primary content

In this example, the headline and hero product are the primary focus, occupying 30% of the overall ratio.

### Secondary content

The text has a secondary focus, occupying 30% of the overall ratio and is centralised with the headline.

Contact details and other information should be placed in the signature footer occupying 10% of the overall ratio.

## Kinohimitsu Grid with Bloom Band - Landscape Layout Principles

Below is an example of how design ratio is used for marketing materials.



### Primary content

In this example, the headline and hero product are the primary focus, occupying 30% of the overall ratio.

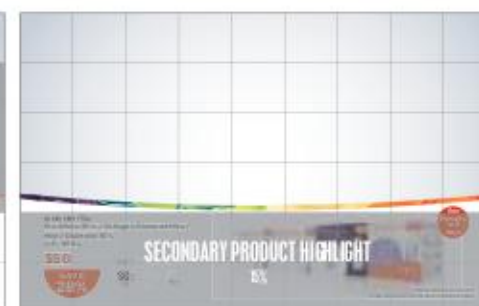
### Secondary content

The secondary products occupies a combined 30% of the overall ratio and is centralised with the headline.

Contact details and other information should be placed in the signature footer occupying 15% of the overall ratio.

## Kinohimitsu Grid with Bloom Band - Landscape Layout Principles

Below is an example of how design ratio is used for marketing materials.



### Primary content

In this example, the headline and hero product are the primary focus, occupying 45% of the overall ratio.

### Secondary content

The secondary product occupies 15% of the overall ratio and is centralised with the headline.

## Print Advertisement - Quarter



## Magazine Spread





# CONTACT US

These guidelines do not cover every eventuality of our brand communications. We recognise that this will continue to evolve and necessary updates are to be made. For assistance and further guidance on communicating our brand, email the marketing team: [Marketing@Kinobiotech.com](mailto:Marketing@Kinobiotech.com)